

# Price List

## Automatic Control Valves



Effective January 19, 2026

All prices supersede previous issues, are temporary and subject to change without notice.

**T**hroughout this book you will see products highlighted with

**LEAD FREE\***

These are Watts products that comply with Lead Free laws in California, VT, MD, and LA. as well as the 2014 Federal “Reduction of Lead in Drinking Water Act” requirements. For more information on our Lead Free products, please visit our Lead Free informational web site at [WeAreLeadFree.net](http://WeAreLeadFree.net).

\*The wetted surface of this product contacted by consumable water contains less than 0.25% of lead by weight.

# Electronic is Green!

**For the latest Watts pricing information in electronic format, visit our Data Exchange at:**

<http://www.wattswater.com/DataExchange>

- Download product and list price data in .csv, .pdf, .tsv, .xls and .xml formats
- Easy access to list price data for business systems
- Sign up for e-mail alerts when data is updated
- Access other Watts Water Technologies brands pricing data

# Table of Contents

|  |           |  |           |
|--|-----------|--|-----------|
| <b>Terms &amp; Conditions</b> .....  | <b>2</b>  | <b>Spare Parts and Kits</b> .....  | <b>25</b> |
| <b>"M" Series</b> .....  | <b>3</b>  | Figure 10-11 Modulating Float Control Pilot .....                            | 25        |
| LFM110-10 Globe / LFM1110-10 Angle.....  | 4         | Figure 10-13 On-Off Float Control Pilot .....                                | 25        |
| LFM110-14 Globe / LFM1110-14 Angle On/Off (open/closed).....                   | 4         | Figure 12 Differential Control Pilot.....                                    | 25        |
| LFM115 Globe / LFM1115 Angle.....  | 5         | PV20DP Differential Control Pilot .....                                      | 25        |
| LFM115 Globe / LFM1115 Angle with<br>Gauges and Position Indicator .....       | 5         | LFCP14-1 Rate of Flow Control Pilot .....                                    | 25        |
| LFM115-3 Globe / LFM1115-3 Angle.....  | 6         | LFPV20C / PV20SS Pressure Sustaining / Relief /<br>Surge Control Pilot ..... | 26        |
| LFM115-7 Globe / LFM1115-7 Angle.....  | 6         | LFPV20CB Direct Acting Pressure Relief Valve .....                           | 26        |
| LFM115-74 Globe / LFM1115-74 Angle.....  | 7-8       | LFPV20 Series Replacement Springs.....                                       | 26        |
| LFM115-74 Globe / LFM1115-74 Angle with<br>Gauges and Position Indicator ..... | 9         | CP-16 Pressure Sustaining / Relief / Surge Control Pilot .....               | 26        |
| LFM116 Globe / LFM1116 Angle.....  | 10        | LF Figure 22 Accelerator Control Pilot, Orifice Supply .....                 | 27        |
| M1116FH Angle .....  | 11        | LF Figure 22-1 Accelerator Control Pilot, Positive Shut-Off.....             | 27        |
| ACV Options (M series).....  | 11        | LF Figure 27 Altitude Control Pilot.....                                     | 27        |
| <b>"S" Series</b> .....  | <b>12</b> | Gauges 2-1/2" Liquid Filled Gauges.....                                      | 28        |
| S115 Globe / S1115 Angle .....   | 13        | LF Figure 60 Flow Clean Strainers.....                                       | 28        |
| <b>"F" Series</b> .....  | <b>14</b> | LF Figure 60-1 Y - Strainers.....  | 28        |
| LFF110-10 Globe / LFF1110-10 Angle .....                                       | 15        | Figure 75-2 Chamber Mounted Float Control Pilot.....                         | 28        |
| LFF110-14 Globe / LFF1110-14 Angle On/Off (open/closed).....                   | 15        | Figure LF263AP<br>Pressure Reducing Control Pilot, Integrally Sensed .....   | 29        |
| LFF113-FP Globe / LFF1113-FP Angle .....                                       | 16        | Figure 263RS Pressure Reducing Control Pilot, Remote Sensed .....            | 29        |
| LFF115 Globe / LFF1115 Angle .....   | 16        | LF Figure 27 Pressure Reducing Control Pilot, Integrally Sensed .....        | 29        |
| LFF115-2 Globe / LFF1115-2 Angle .....   | 17        | Figure 263 Replacement Springs .....   | 29        |
| LFF115-3 Globe / LFF1115-3 Angle .....   | 17        | LFCP-15 Pressure Reducing Control Pilot.....                                 | 30        |
| LFF115-7 Globe / LFF1115-7 Angle .....   | 18        | Fixed Orifice Fixed Orifice Assembly.....                                    | 30        |
| LFF115-74 Globe / LFF1115-74 Angle .....                                       | 18        | Needle Valves Restricts Flow in BOTH Directions .....                        | 30        |
| <b>"JM" Series Pressure Reducing Control Valves</b> .....                      | <b>19</b> | Flow Controls Restricts Flow in ONE Direction.....                           | 30        |
| LFF6115-JM.....  | 19        | Check Valves Isolation Check Valves .....                                    | 31        |
| LFF116 Globe / LFF1116 Angle .....   | 19        | Ball Valves Isolation Ball Valves.....                                       | 31        |
| LFF116-BT Globe / LFF1116-BT Angle.....  | 20        | TC4 Air Bleed Air Bleed Test Cocks.....                                      | 31        |
| ACV Options (F series) .....   | 20        | Solenoids 2-Way / 3-Way.....   | 31        |
| <b>Fire (UL/FM Listed)</b> .....   | <b>21</b> | "M" series Figure 50 Valve Position Indicator.....                           | 32        |
| M115F Globe.....   | 22        | "M" series Figure 53 Manual Flow Limiter .....                               | 32        |
| M1115F Angle.....  | 22        | "M" series LF Figure 51 Single Limit Switch Assembly.....                    | 33        |
| M116FM Globe 20-200 Range .....  | 23        | "M" series LF Figure 51-1 Dual Limit Switch Assembly.....                    | 33        |
| M116FM Globe 100-300 Range .....   | 23        | "M" series Rubber Repair Kits<br>Single Chamber Main Valve Repair Kits.....  | 34        |
| M1116FM Angle 20-200 Range .....   | 23        | Dual Chamber Main Valve Repair Kits .....                                    | 34        |
| M1116FM Angle 100-300 Range .....  | 24        | "M" series Stem Kits Main Valve Replacement Stem Kit.....                    | 35        |
| F116-1FM Globe - Pump Suction Control.....                                     | 24        | "F" series Figure 50 Valve Position Indicator.....                           | 36        |
| F100D-A Globe Deluge Valve .....   | 24        | "F" series Rubber Repair Kits<br>Single Chamber Main Valve Repair Kits.....  | 36        |
| F100D-B Globe Deluge Valve .....   | 24        |  |           |
| LFPV20CB Pressure Relief.....  | 24        |  |           |

## Terms and Conditions

**FREIGHT TERMS:** All shipments are F.O.B. shipping point. Shipments from factory less than 1000 lbs. are F.O.B. factory. Factory shipments OF \$5000 and over within the continental U.S.A. will be prepaid and allowed when made at the lowest motor carrier transportation rate.

**TERMS OF SALE:** All sales are F.O.B. shipping point.

**PAYMENT TERMS:** The invoices are due and payable 30 days from the date of invoice.

**PURCHASE ORDER FORMS:** Orders submitted on customer's own purchase order forms will be accepted only with the express understanding that no statements, clauses, or conditions contained in said order form will be binding on the Seller if they in any way modify the Seller's own terms and conditions of sales.

**STOCKING WHOLESALE MINIMUM CHARGE:** A minimum billing charge of \$200.00 applies to shipments F.O.B. factory. Stocking Wholesaler Customers are encouraged to order sufficient material to avoid this charge which is necessitated by increased costs of processing small orders.

**SPECIAL PRODUCTS:** Orders for special or modified products are non-cancelable. In the event that the customer cancels an order for such products, Watts shall charge the customer an amount equal to Watts' costs and expenses incurred in performing the purchase order prior to receipt of notice of cancellation.

**LIMITED WARRANTY:** Watts Regulator Co. (the "Company") warrants each product to be free from defects in material and workmanship under normal usage for a period of one year from the date of original shipment. In the event of such defects within the warranty period, the Company will, at its option, replace or recondition the product without charge.

**THE WARRANTY SET FORTH HEREIN IS GIVEN EXPRESSLY AND IS THE ONLY WARRANTY GIVEN BY THE COMPANY WITH RESPECT TO THE PRODUCT. THE COMPANY MAKES NO OTHER WARRANTIES, EXPRESS OR IMPLIED. THE COMPANY HEREBY SPECIFICALLY DISCLAIMS ALL OTHER WARRANTIES, EXPRESS OR IMPLIED, INCLUDING BUT NOT LIMITED TO THE IMPLIED WARRANTIES OF MERCHANTABILITY AND FITNESS FOR A PARTICULAR PURPOSE.**

The remedy described in the first paragraph of this warranty shall constitute the sole and exclusive remedy for breach of warranty, and the Company shall not be responsible for any incidental, special or consequential damages, including without limitation, lost profits or the cost of repairing or replacing other property which is damaged if this product does not work properly, other costs resulting from labor charges, delays, vandalism, negligence, fouling caused by foreign material, damage from adverse water conditions, chemical, or any other circumstances over which the Company has no control. This warranty shall be invalidated by any abuse, misuse, misapplication, improper installation or improper maintenance or alteration of the product.

Some States do not allow limitations on how long an implied warranty lasts, and some States do not allow the exclusion or limitation of incidental or consequential damages. Therefore the above limitations may not apply to you. This Limited Warranty gives you specific legal rights, and you may have other rights that vary from State to State. You should consult applicable state laws to determine your rights. **SO FAR AS IS CONSISTENT WITH APPLICABLE STATE LAW, ANY IMPLIED WARRANTIES THAT MAY NOT BE DISCLAIMED, INCLUDING THE IMPLIED WARRANTIES OF MERCHANTABILITY AND FITNESS FOR A PARTICULAR PURPOSE, ARE LIMITED IN DURATION TO ONE YEAR FROM THE DATE OF ORIGINAL SHIPMENT.**

**SERVICE POLICY:** For inoperative products beyond the warranty period, we assume no liability for replacement of valves due to service conditions beyond our control.

**RETURNED GOODS:** No material shall be returned without authorization. When credit is issued it will be at the price charged, or prevailing price if lower, less handling charges based on costs of reconditioning, boxing, etc. However, a minimum 25% handling charge will apply. A minimum handling charge of \$20.00 is applied whenever the 25% handling deduction does not total \$20.00. Products which are obsolete or made to special order are not returnable.

**NOTE:** Prices and terms are subject to change without notice and supersede all previous quotations. The right is reserved to change or modify product design or construction without prior notice and without incurring any obligation to make such changes and modifications on products previously or subsequently sold.

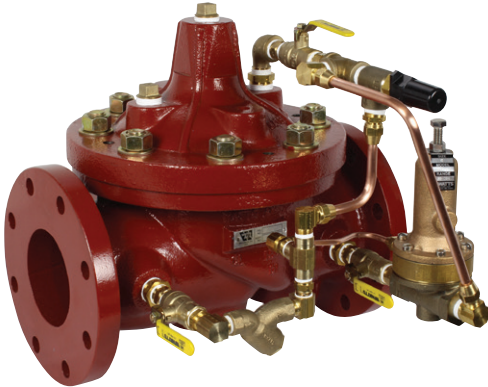
| Lead Free* Series Materials of Construction |  |
|---|--|
| <b>Body &amp; Cover</b>                     | Ductile Iron - Fused Red Epoxy (inside and out)<br>Epoxy Coating (inside & outside) - Burnt Orange |
| <b>Cover Bearing</b>                        | Stainless Steel  |
| <b>Valve Trim</b>                           | Stainless Steel  |
| <b>Elastomers</b>                           | Buna-N (optional EPDM & Viton)   |
| <b>Tubing &amp; Fittings</b>                | Lead Free Brass with Copper Tubing (Stainless Optional)  |
| <b>Pressure Reducing Control</b>            | LFCP15/CP15SS - Lead Free Brass / St-Steel   |
| <b>Elastometer</b>                          | Buna-N -Standard; (options available)  |
| <b>Range</b>                                | 30-300psig (standard)<br>2-30psig (optional)   |
| <b>Pressure Relief Control</b>              | LFPV20C - Lead Free Copper Silicon Alloy   |
| <b>Elastometer</b>                          | Buna-N -Standard; (options available)  |
| <b>Range</b>                                | 20-200psi (options available)  |
| <b>Pressure Sustaining Control</b>          | LFPV20 - Lead Free Copper Silicon Alloy  |
| <b>Elastometer</b>                          | Buna-N -Standard; (options available)  |
| <b>Range</b>                                | 20-200psi (options available)  |
| <b>Surge Control</b>                        | LFPV20C - Lead Free Copper Silicon Alloy   |
| <b>Elastometer</b>                          | Buna-N -Standard; (options available)  |
| <b>Range</b>                                | 20-200psi (options available)  |
| <b>Check Valves</b>                         | Lead Free Copper Silicon Alloy (options available)   |
| <b>Solenoid Control</b>                     | Stainless Steel  |

**Standard Production Valves:**

**Globe pattern 1¼" – 24",  
Angle pattern 1¼" – 12",**

Ductile Iron body and cover with NSF Approved heat fusion bonded epoxy coated (inside & out), Long life non-edged stainless steel seat, FDA Approved Buna-N diaphragm, Top and bottom guided stem. Consult factory for specifications and ordering codes.

A number of models are now armed with ArmorTek®. Products are indicated by (●) in the model description.



\*The wetted surface of this product contacted by consumable water contains less than 0.25% of lead by weight.  
Consult factory for ordering code numbers of special models/options.



| Model | Ordering Code | Size (in.) | Body | Qty. Per Carton | Weight Per Carton (lbs.) | List Price (each) |
|-------|---------------|------------|------|-----------------|--------------------------|-------------------|
|-------|---------------|------------|------|-----------------|--------------------------|-------------------|

### LFM110-10 Globe / LFM1110-10 Angle

#### Float Control - Modulating (Constant Level) – 150# Flanged

| LEAD FREE*      | Model           | Ordering Code | Size (in.) | Body                          | Qty. Per Carton | Weight Per Carton (lbs.) | List Price (each) |
|-----------------|-----------------|---------------|------------|-------------------------------|-----------------|--------------------------|-------------------|
|                 | LFM110-10 Globe | CF**          | 1 1/2"     | Ductile Iron w LF Brass Pilot | 1               | 25                       | CF**              |
|                 | LFM110-10 Globe | 6890-20       | 2"         |                               | 1               | 25                       | 6,729.00          |
|                 | LFM110-10 Globe | CF**          | 2 1/2"     |                               | 1               | 60                       | CF**              |
|                 | LFM110-10 Globe | 7908-12       | 3"         |                               | 1               | 60                       | 8,085.00          |
|                 | LFM110-10 Globe | 4480-06       | 4"         |                               | 1               | 100                      | 12,681.00         |
|                 | LFM110-10 Globe | 8044-24       | 6"         |                               | 1               | 195                      | 15,132.00         |
| LFM110-10 Globe | CF**            | 8"            | 1          |                               | 415             | CF**                     |                   |

#### Float Control - Modulating (Constant Level) – 300# Flanged

| LEAD FREE*      | Model           | Ordering Code | Size (in.) | Body                          | Qty. Per Carton | Weight Per Carton (lbs.) | List Price (each) |
|-----------------|-----------------|---------------|------------|-------------------------------|-----------------|--------------------------|-------------------|
|                 | LFM110-10 Globe | CF**          | 2"         | Ductile Iron w LF Brass Pilot | 1               | 25                       | CF**              |
|                 | LFM110-10 Globe | CF**          | 2 1/2"     |                               | 1               | 75                       | CF**              |
|                 | LFM110-10 Globe | CF**          | 3"         |                               | 1               | 60                       | CF**              |
|                 | LFM110-10 Globe | CF**          | 4"         |                               | 1               | 100                      | CF**              |
|                 | LFM110-10 Globe | CF**          | 6"         |                               | 1               | 195                      | CF**              |
| LFM110-10 Globe | CF**            | 8"            | 1          |                               | 415             | CF**                     |                   |

#### Float Control - Modulating (Constant Level) – Threaded

| LEAD FREE*      | Model           | Ordering Code | Size (in.) | Body                          | Qty. Per Carton | Weight Per Carton (lbs.) | List Price (each) |
|-----------------|-----------------|---------------|------------|-------------------------------|-----------------|--------------------------|-------------------|
|                 | LFM110-10 Globe | CF**          | 1 1/4"     | Ductile Iron w LF Brass Pilot | 1               | 25                       | CF**              |
|                 | LFM110-10 Globe | CF**          | 1 1/2"     |                               | 1               | 25                       | CF**              |
|                 | LFM110-10 Globe | CF**          | 2"         |                               | 1               | 25                       | CF**              |
|                 | LFM110-10 Globe | CF**          | 2 1/2"     |                               | 1               | 60                       | CF**              |
| LFM110-10 Globe | CF**            | 3"            | 1          |                               | 60              | CF**                     |                   |

CF\*\* - Consult Factory

For Angle Valves List Price is the Same as Globe Valves - Consult Factory for Ordering Code

| Model | Ordering Code | Size (in.) | Body | Qty. Per Carton | Weight Per Carton (lbs.) | List Price (each) |
|-------|---------------|------------|------|-----------------|--------------------------|-------------------|
|-------|---------------|------------|------|-----------------|--------------------------|-------------------|

### LFM110-14 Globe / LFM1110-14 Angle On/Off (open/closed)

#### Float Control Valve (Adjustable Hi/Lo level) On/Off Float Valve – 150# Flanged

| LEAD FREE*      | Model           | Ordering Code | Size (in.) | Body                    | Qty. Per Carton | Weight Per Carton (lbs.) | List Price (each) |
|-----------------|-----------------|---------------|------------|-------------------------|-----------------|--------------------------|-------------------|
|                 | LFM110-14 Globe | CF**          | 1 1/2"     | Ductile Iron w SS Pilot | 1               | 35                       | CF**              |
|                 | LFM110-14 Globe | 6890-20       | 2"         |                         | 1               | 35                       | 6,729.00          |
|                 | LFM110-14 Globe | CF**          | 2 1/2"     |                         | 1               | 70                       | CF**              |
|                 | LFM110-14 Globe | 7908-12       | 3"         |                         | 1               | 70                       | 8,085.00          |
|                 | LFM110-14 Globe | 7420-40       | 4"         |                         | 1               | 110                      | 10,570.00         |
|                 | LFM110-14 Globe | 8044-21       | 6"         |                         | 1               | 220                      | 14,114.00         |
| LFM110-14 Globe | 6697-07         | 8"            | 1          |                         | 425             | 30,513.00                |                   |

#### Float Control Valve (Adjustable Hi/Lo level) On/Off Float Valve – 300# Flanged

| LEAD FREE*      | Model           | Ordering Code | Size (in.) | Body                    | Qty. Per Carton | Weight Per Carton (lbs.) | List Price (each) |
|-----------------|-----------------|---------------|------------|-------------------------|-----------------|--------------------------|-------------------|
|                 | LFM110-14 Globe | CF**          | 2"         | Ductile Iron w SS Pilot | 1               | 35                       | CF**              |
|                 | LFM110-14 Globe | CF**          | 2 1/2"     |                         | 1               | 75                       | CF**              |
|                 | LFM110-14 Globe | CF**          | 3"         |                         | 1               | 70                       | CF**              |
|                 | LFM110-14 Globe | CF**          | 4"         |                         | 1               | 110                      | CF**              |
|                 | LFM110-14 Globe | CF**          | 6"         |                         | 1               | 220                      | CF**              |
| LFM110-14 Globe | CF**            | 8"            | 1          |                         | 425             | CF**                     |                   |

#### Float Control Valve (Adjustable Hi/Lo level) On/Off Float Valve – Threaded

| LEAD FREE*      | Model           | Ordering Code | Size (in.) | Body                    | Qty. Per Carton | Weight Per Carton (lbs.) | List Price (each) |
|-----------------|-----------------|---------------|------------|-------------------------|-----------------|--------------------------|-------------------|
|                 | LFM110-14 Globe | CF**          | 1 1/4"     | Ductile Iron w SS Pilot | 1               | 35                       | CF**              |
|                 | LFM110-14 Globe | CF**          | 1 1/2"     |                         | 1               | 35                       | CF**              |
|                 | LFM110-14 Globe | 6890-04       | 2"         |                         | 1               | 35                       | 6,149.00          |
|                 | LFM110-14 Globe | CF**          | 2 1/2"     |                         | 1               | 70                       | CF**              |
| LFM110-14 Globe | 7908-07         | 3"            | 1          |                         | 70              | 6,971.00                 |                   |

CF\*\* - Consult Factory

For Angle Valves List Price is the Same as Globe Valves - Consult Factory for Ordering Code

Valve standard with stainless rods/plastic float. Size 2" - 6" std. with (2) 12" rods. Sizes 8" - 16" std. with (4) 12" rods.

**Additional Rods: LF Series Stainless Steel 12". See ACV options list**

\*The wetted surface of this product contacted by consumable water contains less than 0.25% of lead by weight.

Consult factory for ordering code numbers of special models/options.



| Model   | Ordering Code  | Size (in.) | Body   | Qty. Per Carton               | Weight Per Carton (lbs.) | List Price (each) |           |
|---|----------------|------------|--------|-------------------------------|--------------------------|-------------------|-----------|
| <b>LFM115 Globe / LFM1115 Angle</b>   |                |            |        |                               |                          |                   |           |
| <b>Pressure Reducing Control Valve (30-300 psi Pilot adjustment range) – 150# Flanged</b> |                |            |        |                               |                          |                   |           |
| LEAD FREE*  | LFM115 Globe • | 1GE00005   | 2"     | 1                             | 35                       | 7,562.00          |           |
|   | LFM115 Globe • | 1GE00008   | 2 1/2" | 1                             | 70                       | 7,788.00          |           |
|   | LFM115 Globe • | 1GE00011   | 3"     | 1                             | 70                       | 8,105.00          |           |
|   | LFM115 Globe • | 1GE00013   | 4"     | Ductile Iron w LF Brass Pilot | 1                        | 120               | 10,457.00 |
|   | LFM115 Globe • | 1GE00015   | 6"     |                               | 1                        | 220               | 17,146.00 |
|   | LFM115 Globe • | 1GE00017   | 8"     |                               | 1                        | 425               | 26,987.00 |
| <b>Pressure Reducing Control Valve (30-300 psi Pilot adjustment range) – 300# Flanged</b> |                |            |        |                               |                          |                   |           |
| LEAD FREE*  | LFM115 Globe • | 1GE00009   | 2 1/2" | 1                             | 75                       | CF**              |           |
|   | LFM115 Globe • | 1GE00012   | 3"     | 1                             | 70                       | 8,680.00          |           |
|   | LFM115 Globe • | 1GE00016   | 6"     | Ductile Iron w LF Brass Pilot | 1                        | 220               | CF**      |
|   | LFM115 Globe • | 1GE00018   | 8"     |                               | 1                        | 425               | CF**      |
| <b>Pressure Reducing Control Valve (30-300 psi Pilot adjustment range) – Threaded</b>     |                |            |        |                               |                          |                   |           |
| LEAD FREE*  | LFM115 Globe • | 1GE00001   | 1 1/4" | 1                             | 35                       | 5,864.00          |           |
|   | LFM115 Globe • | 1GE00002   | 1 1/2" | 1                             | 35                       | 5,864.00          |           |
|   | LFM115 Globe • | 1GE00004   | 2"     | Ductile Iron w LF Brass Pilot | 1                        | 35                | 5,996.00  |
|   | LFM115 Globe • | 1GE00007   | 2 1/2" |                               | 1                        | 70                | 7,340.00  |
|   | LFM115 Globe • | 1GE00010   | 3"     |                               | 1                        | 70                | 7,523.00  |

CF\*\* - Consult Factory

For Angle Valves List Price is the Same as Globe Valves - Consult Factory for Ordering Code

- This ACV is armed with ArmorTek®, a patented 3-part advanced epoxy coating system designed to limit both microbial induced (MIC) and exposed metal substrate corrosion.

|   |                |          |        |                               |    |          |           |
|---|----------------|----------|--------|-------------------------------|----|----------|-----------|
| <b>LFM115 Globe / LFM1115 Angle and Postion Indicator</b>                                 |                |          |        |                               |    |          |           |
| <b>Pressure Reducing Control Valve (30-300 psi Pilot adjustment range) – 150# Flanged</b> |                |          |        |                               |    |          |           |
| LEAD FREE*  | LFM115 Globe • | 1GE00021 | 1 1/2" | 1                             | 35 | 8,281.00 |           |
|   | LFM115 Globe • | 1GE00023 | 2"     | 1                             | 35 | 7,718.00 |           |
|   | LFM115 Globe • | 1GE00025 | 2 1/2" | Ductile Iron w LF Brass Pilot | 1  | 70       | 8,193.00  |
|   | LFM115 Globe • | 1GE00027 | 3"     |                               | 1  | 70       | 8,864.00  |
|   | LFM115 Globe • | 1GE00029 | 6"     |                               | 1  | 220      | 17,098.00 |
| <b>Pressure Reducing Control Valve (30-300 psi Pilot adjustment range) – Threaded</b>     |                |          |        |                               |    |          |           |
| LEAD FREE*  | LFM115 Globe • | 1GE00019 | 1 1/4" | 1                             | 35 | 8,106.00 |           |
|   | LFM115 Globe • | 1GE00020 | 1 1/2" | 1                             | 35 | 8,241.00 |           |
|   | LFM115 Globe • | 1GE00022 | 2"     | Ductile Iron w LF Brass Pilot | 1  | 35       | 7,462.00  |
|   | LFM115 Globe • | 1GE00024 | 2 1/2" |                               | 1  | 70       | 8,062.00  |
|   | LFM115 Globe • | 1GE00026 | 3"     |                               | 1  | 70       | 8,721.00  |

CF\*\* - Consult Factory

For Angle Valves List Price is the Same as Globe Valves - Consult Factory for Ordering Code

- This ACV is armed with ArmorTek®, a patented 3-part advanced epoxy coating system designed to limit both microbial induced (MIC) and exposed metal substrate corrosion.

\*The wetted surface of this product contacted by consumable water contains less than 0.25% of lead by weight.

Consult factory for ordering code numbers of special models/options.



|   | Model          | Ordering Code | Size (in.) | Body                          | Qty. Per Carton | Weight Per Carton (lbs.) | List Price (each) |
|---|----------------|---------------|------------|-------------------------------|-----------------|--------------------------|-------------------|
| <b>LFM115-3 Globe / LFM1115-3 Angle</b>   |                |               |            |                               |                 |                          |                   |
| <b>Pressure Reducing and Check Valve (30-300 psi Pilot adjustment range) – 150# Flanged</b> |                |               |            |                               |                 |                          |                   |
| LEAD FREE*  | LFM115-3 Globe | CF**          | 1 1/2"     | Ductile Iron w LF Brass Pilot | 1               | 35                       | CF**              |
|   | LFM115-3 Globe | V4219-21      | 2"         |                               | 1               | 35                       | 6,163.00          |
|   | LFM115-3 Globe | 8780-37       | 3"         |                               | 1               | 70                       | 10,075.00         |
|   | LFM115-3 Globe | CF**          | 6"         |                               | 1               | 220                      | CF**              |
|   | LFM115-3 Globe | CF**          | 8"         |                               | 1               | 425                      | CF**              |
| <b>Pressure Reducing and Check Valve (30-300 psi Pilot adjustment range) – 300# Flanged</b> |                |               |            |                               |                 |                          |                   |
| LEAD FREE*  | LFM115-3 Globe | 4219-48       | 2"         | Ductile Iron w LF Brass Pilot | 1               | 35                       | 9,045.00          |
|   | LFM115-3 Globe | CF**          | 2 1/2"     |                               | 1               | 75                       | CF**              |
|   | LFM115-3 Globe | 8780-20       | 3"         |                               | 1               | 70                       | 9,922.00          |
|   | LFM115-3 Globe | 8842-13       | 4"         |                               | 1               | 120                      | 10,971.00         |
|   | LFM115-3 Globe | CF**          | 6"         |                               | 1               | 220                      | CF**              |
|   | LFM115-3 Globe | CF**          | 8"         |                               | 1               | 425                      | CF**              |
| <b>Pressure Reducing and Check Valve (30-300 psi Pilot adjustment range) – Threaded</b>     |                |               |            |                               |                 |                          |                   |
| LEAD FREE*  | LFM115-3 Globe | 8536-15       | 1 1/4"     | Ductile Iron w LF Brass Pilot | 1               | 35                       | 7,821.00          |
|   | LFM115-3 Globe | 7618-21       | 1 1/2"     |                               | 1               | 35                       | 7,821.00          |
|   | LFM115-3 Globe | 4219-34       | 2"         |                               | 1               | 35                       | 7,956.00          |
|   | LFM115-3 Globe | 7211-31       | 2 1/2"     |                               | 1               | 70                       | 9,310.00          |
|   | LFM115-3 Globe | CF**          | 3"         |                               | 1               | 70                       | CF**              |

CF\*\* - Consult Factory

For Angle Valves List Price is the Same as Globe Valves- Consult Factory for Ordering Code

|  | Model          | Ordering Code | Size (in.) | Body                          | Qty. Per Carton | Weight Per Carton (lbs.) | List Price (each) |
|--|----------------|---------------|------------|-------------------------------|-----------------|--------------------------|-------------------|
| <b>LFM115-7 Globe / LFM1115-7 Angle</b>  |                |               |            |                               |                 |                          |                   |
| <b>Pressure Reducing and Downstream Surge Control Valve (30-300 psi Pilot adjustment range) – 150# Flanged</b> |                |               |            |                               |                 |                          |                   |
| LEAD FREE*   | LFM115-7 Globe | CF**          | 1 1/2"     | Ductile Iron w LF Brass Pilot | 1               | 35                       | CF**              |
|  | LFM115-7 Globe | 8917-10       | 2"         |                               | 1               | 35                       | 6,516.00          |
|  | LFM115-7 Globe | CF**          | 2 1/2"     |                               | 1               | 70                       | CF**              |
|  | LFM115-7 Globe | 8918-17       | 3"         |                               | 1               | 70                       | 10,439.00         |
|  | LFM115-7 Globe | 8966-13       | 4"         |                               | 1               | 120                      | 12,698.00         |
|  | LFM115-7 Globe | 5605-21       | 6"         |                               | 1               | 220                      | 15,861.00         |
| <b>Pressure Reducing and Downstream Surge Control Valve (30-300 psi Pilot adjustment range) – 300# Flanged</b> |                |               |            |                               |                 |                          |                   |
| LEAD FREE*   | LFM115-7 Globe | CF**          | 2"         | Ductile Iron w LF Brass Pilot | 1               | 35                       | CF**              |
|  | LFM115-7 Globe | CF**          | 2 1/2"     |                               | 1               | 75                       | CF**              |
|  | LFM115-7 Globe | CF**          | 3"         |                               | 1               | 70                       | CF**              |
|  | LFM115-7 Globe | CF**          | 4"         |                               | 1               | 120                      | CF**              |
|  | LFM115-7 Globe | CF**          | 6"         |                               | 1               | 220                      | CF**              |
|  | LFM115-7 Globe | CF**          | 8"         |                               | 1               | 425                      | CF**              |
| <b>Pressure Reducing and Downstream Surge Control Valve (30-300 psi Pilot adjustment range) – Threaded</b>     |                |               |            |                               |                 |                          |                   |
| LEAD FREE*   | LFM115-7 Globe | 2401-06       | 1 1/4"     | Ductile Iron w LF Brass Pilot | 1               | 35                       | 8,211.00          |
|  | LFM115-7 Globe | CF**          | 1 1/2"     |                               | 1               | 35                       | CF**              |
|  | LFM115-7 Globe | 8917-14       | 2"         |                               | 1               | 35                       | 8,339.00          |
|  | LFM115-7 Globe | 8492-18       | 2 1/2"     |                               | 1               | 70                       | 9,644.00          |
|  | LFM115-7 Globe | CF**          | 3"         |                               | 1               | 70                       | CF**              |

CF\*\* - Consult Factory

For Threaded Angle Valves List Price is the Same as Globe Valves- Consult Factory for Ordering Code

\*The wetted surface of this product contacted by consumable water contains less than 0.25% of lead by weight.

Consult factory for ordering code numbers of special models/options.

| Model | Low Flow Bypass adjustment range | Ordering Code | Size (in.) | Body | Qty. Per Carton | Weight Per Carton (lbs.) | List Price (each) |
|-------|----------------------------------|---------------|------------|------|-----------------|--------------------------|-------------------|
|-------|----------------------------------|---------------|------------|------|-----------------|--------------------------|-------------------|

### LFM115-74 Globe / LFM1115-74 Angle

#### Pressure Reducing Control Valve with Low Flow By-Pass (30-300 psi Pilot adjustment range) – 150# Flanged

| LEAD FREE* | LFM115-74 Globe • | 20 - 200psi | 1GE00068 | 1 1/2" | Ductile Iron w LF Brass Pilot | 1 | 40  | 7,593.00  |
|------------|-------------------|-------------|----------|--------|-------------------------------|---|-----|-----------|
|            | LFM115-74 Globe • | 20 - 200psi | 1GE00070 | 2"     |                               | 1 | 40  | 7,751.00  |
|            | LFM115-74 Globe • | 20 - 200psi | 1GE00073 | 2 1/2" |                               | 1 | 75  | 7,893.00  |
|            | LFM115-74 Globe • | 20 - 200psi | 1GE00076 | 3"     |                               | 1 | 75  | 8,740.00  |
|            | LFM115-74 Globe • | 20 - 200psi | 1GE00078 | 4"     |                               | 1 | 125 | 14,833.00 |
|            | LFM115-74 Globe • | 20 - 200psi | 1GE00080 | 6"     |                               | 1 | 230 | 15,673.00 |

#### Pressure Reducing Control Valve with Low Flow By-Pass (30-300 psi Pilot adjustment range) – 300# Flanged

| LEAD FREE* | LFM115-74 Globe • | 20 - 200psi | 1GE00071 | 2"     | Ductile Iron w LF Brass Pilot | 1 | 40  | 9,769.00 |
|------------|-------------------|-------------|----------|--------|-------------------------------|---|-----|----------|
|            | LFM115-74 Globe • | 20 - 200psi | 1GE00074 | 2 1/2" |                               | 1 | 75  | CF**     |
|            | LFM115-74 Globe • | 20 - 200psi | 1GE00077 | 3"     |                               | 1 | 75  | CF**     |
|            | LFM115-74 Globe • | 20 - 200psi | 1GE00079 | 4"     |                               | 1 | 125 | CF**     |
|            | LFM115-74 Globe • | 20 - 200psi | 1GE00081 | 6"     |                               | 1 | 230 | CF**     |

#### Pressure Reducing Control Valve with Low Flow By-Pass (30-300 psi Pilot adjustment range) – Threaded

| LEAD FREE* | LFM115-74 Globe • | 20 - 200psi | 1GE00066 | 1 1/4" | Ductile Iron w LF Brass Pilot | 1 | 40 | 7,363.00 |
|------------|-------------------|-------------|----------|--------|-------------------------------|---|----|----------|
|            | LFM115-74 Globe • | 20 - 200psi | 1GE00067 | 1 1/2" |                               | 1 | 40 | 7,363.00 |
|            | LFM115-74 Globe • | 20 - 200psi | 1GE00069 | 2"     |                               | 1 | 40 | 7,523.00 |
|            | LFM115-74 Globe • | 20 - 200psi | 1GE00072 | 2 1/2" |                               | 1 | 75 | 9,295.00 |
|            | LFM115-74 Globe • | 20 - 200psi | 1GE00075 | 3"     |                               | 1 | 75 | 8,728.00 |

CF\*\* - Consult Factory

For Angle Valves List Price is the Same, Consult Factory for Ordering Code

•This ACV is armed with ArmorTek®, a patented 3-part advanced epoxy coating system designed to limit both microbial induced (MIC) and exposed metal substrate corrosion.

| Model | Low Flow Bypass adjustment range | Ordering Code | Size (in.) | Body | Qty. Per Carton | Weight Per Carton (lbs.) | List Price (each) |
|-------|----------------------------------|---------------|------------|------|-----------------|--------------------------|-------------------|
|-------|----------------------------------|---------------|------------|------|-----------------|--------------------------|-------------------|

### LFM115-74 Globe / LFM1115-74 Angle

#### Pressure Reducing Control Valve with Low Flow By-Pass (30-300 psi Pilot adjustment range) – 150# Flanged

| LEAD FREE* | LFM115-74 Globe • | 50 - 145psi | 1GE00084 | 1 1/2" | Ductile Iron w LF Brass Pilot | 1 | 40  | 7,593.00  |
|------------|-------------------|-------------|----------|--------|-------------------------------|---|-----|-----------|
|            | LFM115-74 Globe • | 50 - 145psi | 1GE00086 | 2"     |                               | 1 | 40  | 7,751.00  |
|            | LFM115-74 Globe • | 50 - 145psi | 1GE00089 | 2 1/2" |                               | 1 | 75  | 7,605.00  |
|            | LFM115-74 Globe • | 50 - 145psi | 1GE00092 | 3"     |                               | 1 | 75  | 8,451.00  |
|            | LFM115-74 Globe • | 50 - 145psi | 1GE00094 | 4"     |                               | 1 | 125 | 14,544.00 |

#### Pressure Reducing Control Valve with Low Flow By-Pass (30-300 psi Pilot adjustment range) – 300# Flanged

| LEAD FREE* | LFM115-74 Globe • | 50 - 145psi | 1GE00087 | 2"     | Ductile Iron w LF Brass Pilot | 1 | 40  | 9,769.00  |
|------------|-------------------|-------------|----------|--------|-------------------------------|---|-----|-----------|
|            | LFM115-74 Globe • | 50 - 145psi | 1GE00090 | 2 1/2" |                               | 1 | 75  | 9,772.00  |
|            | LFM115-74 Globe • | 50 - 145psi | 1GE00093 | 3"     |                               | 1 | 75  | 10,182.00 |
|            | LFM115-74 Globe • | 50 - 145psi | 1GE00095 | 4"     |                               | 1 | 125 | 13,225.00 |
|            | LFM115-74 Globe • | 50 - 145psi | 1GE00097 | 6"     |                               | 1 | 230 | 21,863.00 |

#### Pressure Reducing Control Valve with Low Flow By-Pass (30-300 psi Pilot adjustment range) – Threaded

| LEAD FREE* | LFM115-74 Globe • | 50 - 145psi | 1GE00082 | 1 1/4" | Ductile Iron w LF Brass Pilot | 1 | 40 | 7,363.00 |
|------------|-------------------|-------------|----------|--------|-------------------------------|---|----|----------|
|            | LFM115-74 Globe • | 50 - 145psi | 1GE00083 | 1 1/2" |                               | 1 | 40 | 7,363.00 |
|            | LFM115-74 Globe • | 50 - 145psi | 1GE00085 | 2"     |                               | 1 | 40 | 7,523.00 |
|            | LFM115-74 Globe • | 50 - 145psi | 1GE00088 | 2 1/2" |                               | 1 | 75 | 9,005.00 |
|            | LFM115-74 Globe • | 50 - 145psi | 1GE00091 | 3"     |                               | 1 | 75 | 8,440.00 |

CF\*\* - Consult Factory

For Angle Valves List Price is the Same as Globe Valves- Consult Factory for Ordering Code

•This ACV is armed with ArmorTek®, a patented 3-part advanced epoxy coating system designed to limit both microbial induced (MIC) and exposed metal substrate corrosion.

\*The wetted surface of this product contacted by consumable water contains less than 0.25% of lead by weight.

Consult factory for ordering code numbers of special models/options.



| Model | Low Flow Bypass adjustment range | Ordering Code | Size (in.) | Body | Qty. Per Carton | Weight Per Carton (lbs.) | List Price (each) |
|-------|----------------------------------|---------------|------------|------|-----------------|--------------------------|-------------------|
|-------|----------------------------------|---------------|------------|------|-----------------|--------------------------|-------------------|

### LFM115-74 Globe / LFM1115-74 Angle

#### Pressure Reducing Control Valve with Low Flow By-Pass (10-25 psi Pilot adjustment range) – 150# Flanged

| LEAD FREE* | LFM115-74 Globe • | 25 - 75psi | 1GE00100 | 1 1/2" | Ductile Iron w LF Brass Pilot | 1 | 40  | 7,593.00  |
|------------|-------------------|------------|----------|--------|-------------------------------|---|-----|-----------|
|            | LFM115-74 Globe • | 25 - 75psi | 1GE00102 | 2"     |                               | 1 | 40  | 7,751.00  |
|            | LFM115-74 Globe • | 25 - 75psi | 1GE00105 | 2 1/2" |                               | 1 | 75  | 8,230.00  |
|            | LFM115-74 Globe • | 25 - 75psi | 1GE00108 | 3"     |                               | 1 | 75  | 9,078.00  |
|            | LFM115-74 Globe • | 25 - 75psi | 1GE00110 | 4"     |                               | 1 | 125 | 15,170.00 |
|            | LFM115-74 Globe • | 25 - 75psi | 1GE00112 | 6"     |                               | 1 | 230 | 15,998.00 |

#### Pressure Reducing Control Valve with Low Flow By-Pass (10-25 psi Pilot adjustment range) – 300# Flanged

| LEAD FREE* | LFM115-74 Globe • | 25 - 75psi | 1GE00103 | 2"     | Ductile Iron w LF Brass Pilot | 1 | 40  | 9,769.00  |
|------------|-------------------|------------|----------|--------|-------------------------------|---|-----|-----------|
|            | LFM115-74 Globe • | 25 - 75psi | 1GE00106 | 2 1/2" |                               | 1 | 75  | 10,398.00 |
|            | LFM115-74 Globe • | 25 - 75psi | 1GE00109 | 3"     |                               | 1 | 75  | 10,809.00 |
|            | LFM115-74 Globe • | 25 - 75psi | 1GE00111 | 4"     |                               | 1 | 125 | 13,851.00 |
|            | LFM115-74 Globe • | 25 - 75psi | 1GE00113 | 6"     |                               | 1 | 230 | 22,478.00 |

#### Pressure Reducing Control Valve with Low Flow By-Pass (10-25 psi Pilot adjustment range) – Threaded

| LEAD FREE* | LFM115-74 Globe • | 25 - 75psi | 1GE00098 | 1 1/4" | Ductile Iron w LF Brass Pilot | 1 | 40 | 7,363.00 |
|------------|-------------------|------------|----------|--------|-------------------------------|---|----|----------|
|            | LFM115-74 Globe • | 25 - 75psi | 1GE00099 | 1 1/2" |                               | 1 | 40 | 7,363.00 |
|            | LFM115-74 Globe • | 25 - 75psi | 1GE00101 | 2"     |                               | 1 | 40 | 7,523.00 |
|            | LFM115-74 Globe • | 25 - 75psi | 1GE00104 | 2 1/2" |                               | 1 | 75 | 9,633.00 |
|            | LFM115-74 Globe • | 25 - 75psi | 1GE00107 | 3"     |                               | 1 | 75 | 9,066.00 |

CF\*\* - Consult Factory

For Angle Valves List Price is the Same as Globe Valves- Consult Factory for Ordering Code

- This ACV is armed with ArmorTek®, a patented 3-part advanced epoxy coating system designed to limit both microbial induced (MIC) and exposed metal substrate corrosion.

\*The wetted surface of this product contacted by consumable water contains less than 0.25% of lead by weight.

Consult factory for ordering code numbers of special models/options.



| Model | Low Flow Bypass adjustment range | Ordering Code | Size (in.) | Body | Qty. Per Carton | Weight Per Carton (lbs.) | List Price (each) |
|-------|----------------------------------|---------------|------------|------|-----------------|--------------------------|-------------------|
|-------|----------------------------------|---------------|------------|------|-----------------|--------------------------|-------------------|

### LFM115-74 Globe / LFM1115-74 Angle with Postion Indicator

#### Pressure Reducing Control Valve with Low Flow By-Pass (30-300 psi Pilot adjustment range) – 150# Flanged

|                   |             |          |        |                               |   |     |           |
|-------------------|-------------|----------|--------|-------------------------------|---|-----|-----------|
| LFM115-74 Globe • | 20 - 200psi | 1GE00115 | 2"     | Ductile Iron w LF Brass Pilot | 1 | 40  | 9,144.00  |
| LFM115-74 Globe • | 20 - 200psi | 1GE00117 | 2 1/2" |                               | 1 | 75  | 8,533.00  |
| LFM115-74 Globe • | 20 - 200psi | 1GE00119 | 3"     |                               | 1 | 75  | 9,205.00  |
| LFM115-74 Globe • | 20 - 200psi | 1GE00120 | 4"     |                               | 1 | 125 | 15,309.00 |

#### Pressure Reducing Control Valve with Low Flow By-Pass (30-300 psi Pilot adjustment range) – Threaded

|                   |             |          |        |                               |   |    |          |
|-------------------|-------------|----------|--------|-------------------------------|---|----|----------|
| LFM115-74 Globe • | 20 - 200psi | 1GE00114 | 2"     | Ductile Iron w LF Brass Pilot | 1 | 40 | 8,886.00 |
| LFM115-74 Globe • | 20 - 200psi | 1GE00116 | 2 1/2" |                               | 1 | 75 | 9,936.00 |
| LFM115-74 Globe • | 20 - 200psi | 1GE00118 | 3"     |                               | 1 | 75 | 9,195.00 |

For Angle Valves List Price is the Same as Globe Valves- Consult Factory for Ordering Code

- This ACV is armed with ArmorTek®, a patented 3-part advanced epoxy coating system designed to limit both microbial induced (MIC) and exposed metal substrate corrosion.

| Model | Low Flow Bypass adjustment range | Ordering Code | Size (in.) | Body | Qty. Per Carton | Weight Per Carton (lbs.) | List Price (each) |
|-------|----------------------------------|---------------|------------|------|-----------------|--------------------------|-------------------|
|-------|----------------------------------|---------------|------------|------|-----------------|--------------------------|-------------------|

### LFM115-74 Globe / LFM1115-74 Angle with Postion Indicator

#### Pressure Reducing Control Valve with Low Flow By-Pass (30-300 psi Pilot adjustment range) – 150# Flanged

|                   |             |          |        |                               |   |     |           |
|-------------------|-------------|----------|--------|-------------------------------|---|-----|-----------|
| LFM115-74 Globe • | 50 - 145psi | 1GE00122 | 2"     | Ductile Iron w LF Brass Pilot | 1 | 40  | 9,144.00  |
| LFM115-74 Globe • | 50 - 145psi | 1GE00124 | 2 1/2" |                               | 1 | 75  | 8,245.00  |
| LFM115-74 Globe • | 50 - 145psi | 1GE00126 | 3"     |                               | 1 | 75  | 8,917.00  |
| LFM115-74 Globe • | 50 - 145psi | 1GE00127 | 4"     |                               | 1 | 125 | 15,021.00 |

#### Pressure Reducing Control Valve with Low Flow By-Pass (30-300 psi Pilot adjustment range) – Threaded

|                   |             |          |        |                               |   |    |          |
|-------------------|-------------|----------|--------|-------------------------------|---|----|----------|
| LFM115-74 Globe • | 50 - 145psi | 1GE00121 | 2"     | Ductile Iron w LF Brass Pilot | 1 | 40 | 8,886.00 |
| LFM115-74 Globe • | 50 - 145psi | 1GE00123 | 2 1/2" |                               | 1 | 75 | 9,647.00 |
| LFM115-74 Globe • | 50 - 145psi | 1GE00125 | 3"     |                               | 1 | 75 | 8,907.00 |

For Angle Valves List Price is the Same as Globe Valves- Consult Factory for Ordering Code

- This ACV is armed with ArmorTek®, a patented 3-part advanced epoxy coating system designed to limit both microbial induced (MIC) and exposed metal substrate corrosion.

| Model | Low Flow Bypass adjustment range | Ordering Code | Size (in.) | Body | Qty. Per Carton | Weight Per Carton (lbs.) | List Price (each) |
|-------|----------------------------------|---------------|------------|------|-----------------|--------------------------|-------------------|
|-------|----------------------------------|---------------|------------|------|-----------------|--------------------------|-------------------|

### LFM115-74 Globe / LFM1115-74 Angle with Postion Indicator

#### Pressure Reducing Control Valve with Low Flow By-Pass (10-75 psi Pilot adjustment range) – 150# Flanged

|                   |            |          |        |                               |   |     |           |
|-------------------|------------|----------|--------|-------------------------------|---|-----|-----------|
| 7,572.00          | 25 - 75psi | 1GE00129 | 2"     | Ductile Iron w LF Brass Pilot | 1 | 40  | 9,144.00  |
| LFM115-74 Globe • | 25 - 75psi | 1GE00131 | 2 1/2" |                               | 1 | 75  | 8,870.00  |
| LFM115-74 Globe • | 25 - 75psi | 1GE00133 | 3"     |                               | 1 | 75  | 9,544.00  |
| LFM115-74 Globe • | 25 - 75psi | 1GE00134 | 4"     |                               | 1 | 125 | 15,647.00 |

#### Pressure Reducing Control Valve with Low Flow By-Pass (10-75 psi Pilot adjustment range) – Threaded

|                   |            |          |        |                               |   |    |           |
|-------------------|------------|----------|--------|-------------------------------|---|----|-----------|
| LFM115-74 Globe • | 25 - 75psi | 1GE00128 | 2"     | Ductile Iron w LF Brass Pilot | 1 | 40 | 8,886.00  |
| LFM115-74 Globe • | 25 - 75psi | 1GE00130 | 2 1/2" |                               | 1 | 75 | 10,274.00 |
| LFM115-74 Globe • | 25 - 75psi | 1GE00132 | 3"     |                               | 1 | 75 | 9,531.00  |

For Angle Valves List Price is the Same as Globe Valves- Consult Factory for Ordering Code

- This ACV is armed with ArmorTek®, a patented 3-part advanced epoxy coating system designed to limit both microbial induced (MIC) and exposed metal substrate corrosion.

\*The wetted surface of this product contacted by consumable water contains less than 0.25% of lead by weight.

Consult factory for ordering code numbers of special models/options.



| Model   | Ordering Code  | Size (in.) | Body   | Qty. Per Carton               | Weight Per Carton (lbs.) | List Price (each) |           |
|---|----------------|------------|--------|-------------------------------|--------------------------|-------------------|-----------|
| <b>LFM116 Globe / LFM1116 Angle</b>   |                |            |        |                               |                          |                   |           |
| <b>Pressure Relief, Sustaining or Backpressure Control Valve (20 - 200 psi Pilot adjustment range) – 150# Flanged</b> |                |            |        |                               |                          |                   |           |
| LEAD FREE*  | LFM116 Globe • | 1GK00003   | 1 1/2" | Ductile Iron w LF Brass Pilot | 1                        | 35                | 6,601.00  |
|   | LFM116 Globe • | 1GK00005   | 2"     |                               | 1                        | 35                | 8,089.00  |
|   | LFM116 Globe • | 1GK00008   | 2 1/2" |                               | 1                        | 70                | 7,862.00  |
|   | LFM116 Globe • | 1GK00011   | 3"     |                               | 1                        | 70                | 6,089.00  |
|   | LFM116 Globe • | 1GK00013   | 4"     |                               | 1                        | 120               | 12,441.00 |
|   | LFM116 Globe • | 1GK00015   | 6"     |                               | 1                        | 220               | 17,383.00 |
|   | LFM116 Globe • | 1GK00017   | 8"     |                               | 1                        | 425               | 28,564.00 |
| <b>Pressure Relief, Sustaining or Backpressure Control Valve (20 - 200 psi Pilot adjustment range) – 300# Flanged</b> |                |            |        |                               |                          |                   |           |
| LEAD FREE*  | LFM116 Globe • | 1GK00006   | 2"     | Ductile Iron w LF Brass Pilot | 1                        | 35                | 8,493.00  |
|   | LFM116 Globe • | 1GK00009   | 2 1/2" |                               | 1                        | 70                | 8,749.00  |
|   | LFM116 Globe • | 1GK00012   | 3"     |                               | 1                        | 70                | 9,107.00  |
|   | LFM116 Globe • | 1GK00014   | 4"     |                               | 1                        | 120               | 11,751.00 |
|   | LFM116 Globe • | 1GK00016   | 6"     |                               | 1                        | 220               | 19,263.00 |
|   | LFM116 Globe • | 1GK00018   | 8"     |                               | 1                        | 425               | 30,318.00 |
| <b>Pressure Relief, Sustaining or Backpressure Control Valve (20 - 200 psi Pilot adjustment range) – Threaded</b>     |                |            |        |                               |                          |                   |           |
| LEAD FREE*  | LFM116 Globe • | 1GK00001   | 1 1/4" | Ductile Iron w LF Brass Pilot | 1                        | 35                | 6,403.00  |
|   | LFM116 Globe • | 1GK00002   | 1 1/2" |                               | 1                        | 35                | 6,229.00  |
|   | LFM116 Globe • | 1GK00007   | 2 1/2" |                               | 1                        | 70                | 8,082.00  |
|   | LFM116 Globe • | 1GK00010   | 3"     |                               | 1                        | 70                | 8,195.00  |

CF\*\* - Consult Factory

For Angle Valves List Price is the Same as Globe Valves- Consult Factory for Ordering Code

**Optional 100-300 psi range. See ACV Options sheet**

- This ACV is armed with ArmorTek®, a patented 3-part advanced epoxy coating system designed to limit both microbial induced (MIC) and exposed metal substrate corrosion.

\*The wetted surface of this product contacted by consumable water contains less than 0.25% of lead by weight.

Consult factory for ordering code numbers of special models/options.

| Model | Ordering Code | Size (in.) | Body | Qty. Per Carton | Weight Per Carton (lbs.) | List Price (each) |
|-------|---------------|------------|------|-----------------|--------------------------|-------------------|
|-------|---------------|------------|------|-----------------|--------------------------|-------------------|

**M1116FH Angle**

**Fire Hydrant Relief Valve (20 – 200psi Pilot adjustment range) – Threaded**

|                   |               |          |    |              |   |    |          |
|-------------------|---------------|----------|----|--------------|---|----|----------|
| <b>LEAD FREE*</b> | M1116FH Angle | VT030504 | 2" | Ductile Iron | 1 | 45 | 6,848.00 |
|-------------------|---------------|----------|----|--------------|---|----|----------|

**ACV Options (M series): List Price Adders**

| Model                | Size (in.) | Description        |   |   | List Price (each) |
|----------------------|------------|--------------------|---|---|-------------------|
| LFM116/LFM1116       | All        | 100-300 PSIG Range | - | - | Add \$388.25      |
| LFM110-14/LFM1110-14 | All        | Float Rods         | - | - | Add \$95.50       |

\*The wetted surface of this product contacted by consumable water contains less than 0.25% of lead by weight.  
 Consult factory for ordering code numbers of special models/options.

### Lead Free\* Series Materials of Construction

|                                  |  |
|----------------------------------|--|
| <b>Body &amp; Cover</b>          | Stainless Steel                              |
| <b>Cover Bearing</b>             | Stainless Steel                              |
| <b>Valve Trim</b>                | Stainless Steel                              |
| <b>Elastomers</b>                | Buna-N (optional EPDM & Viton)               |
| <b>Tubing &amp; Fittings</b>     | Stainless Steel Tubing and Fitting           |
| <b>Pressure Reducing Control</b> | CP15SS - Stainless-Steel                     |
| <b>Elastometer</b>               | Buna-N -Standard; (options available)        |
| <b>Range</b>                     | 30-300psig (standard)<br>2-30psig (optional) |

**Standard Production Valves:**

**Globe pattern 1¼" – 16",**  
**Angle pattern 1¼" – 12",**  
 NSF approved Stainless Steel body and cover, Long life non-edged stainless steel seat, FDA Approved Buna-N diaphragm, Top and bottom guided stem. Consult factory for specifications and ordering codes.



\*The wetted surface of this product contacted by consumable water contains less than 0.25% of lead by weight.  
 Consult factory for ordering code numbers of special models/options.

| Model | Ordering Code | Size (in.) | Body | Qty. Per Carton | Weight Per Carton (lbs.) | List Price (each) |
|-------|---------------|------------|------|-----------------|--------------------------|-------------------|
|-------|---------------|------------|------|-----------------|--------------------------|-------------------|

### S115 Globe

#### Pressure Reducing Control Valve (30-300 psi Pilot adjustment range) – 150# Flanged

|            |            |         |        |           |   |           |
|------------|------------|---------|--------|-----------|---|-----------|
| LEAD FREE* | S115 Globe | 3100-15 | 1 1/2" | St. Steel | 1 | 15,674.00 |
|            | S115 Globe | 3100-20 | 2"     |           | 1 | 17,081.00 |
|            | S115 Globe | 3100-25 | 2 1/2" |           | 1 | 21,392.00 |
|            | S115 Globe | 3100-30 | 3"     |           | 1 | 22,328.00 |
|            | S115 Globe | 3100-40 | 4"     |           | 1 | 32,522.00 |

#### Pressure Reducing Control Valve (30-300 psi Pilot adjustment range) – 300# Flanged

|            |            |      |        |           |   |      |
|------------|------------|------|--------|-----------|---|------|
| LEAD FREE* | S115 Globe | CF** | 2"     | St. Steel | 1 | CF** |
|            | S115 Globe | CF** | 2 1/2" |           | 1 | CF** |
|            | S115 Globe | CF** | 3"     |           | 1 | CF** |
|            | S115 Globe | CF** | 4"     |           | 1 | CF** |

#### Pressure Reducing Control Valve (30-300 psi Pilot adjustment range) – Threaded

|            |            |         |        |           |   |           |
|------------|------------|---------|--------|-----------|---|-----------|
| LEAD FREE* | S115 Globe | 3120-10 | 1 1/4" | St. Steel | 1 | 15,369.00 |
|            | S115 Globe | 3120-15 | 1 1/2" |           | 1 | 15,369.00 |
|            | S115 Globe | 3120-25 | 2 1/2" |           | 1 | 19,233.00 |
|            | S115 Globe | 3120-30 | 3"     |           | 1 | 21,714.00 |

CF\*\* - Consult Factory

### S1115 Angle

| Model | Size (in.) | Description | List Price (each) |
|-------|------------|-------------|-------------------|
|-------|------------|-------------|-------------------|

#### Pressure Reducing Control Valve (30-300 psi Pilot adjustment range) – 150# Flanged

|            |             |         |        |           |   |           |
|------------|-------------|---------|--------|-----------|---|-----------|
| LEAD FREE* | S1115 Angle | 3110-15 | 1 1/2" | St. Steel | 1 | 15,674.00 |
|            | S1115 Angle | 3110-20 | 2"     |           | 1 | 17,081.00 |
|            | S1115 Angle | 3110-25 | 2 1/2" |           | 1 | 21,392.00 |
|            | S1115 Angle | 3110-30 | 3"     |           | 1 | 22,328.00 |
|            | S1115 Angle | 3110-40 | 4"     |           | 1 | 32,522.00 |

#### Pressure Reducing Control Valve (30-300 psi Pilot adjustment range) – 300# Flanged

|            |             |      |        |           |   |      |
|------------|-------------|------|--------|-----------|---|------|
| LEAD FREE* | S1115 Angle | CF** | 2"     | St. Steel | 1 | CF** |
|            | S1115 Angle | CF** | 2 1/2" |           | 1 | CF** |
|            | S1115 Angle | CF** | 3"     |           | 1 | CF** |
|            | S1115 Angle | CF** | 4"     |           | 1 | CF** |

#### Pressure Reducing Control Valve (30-300 psi Pilot adjustment range) – Threaded

|            |             |         |        |           |   |           |
|------------|-------------|---------|--------|-----------|---|-----------|
| LEAD FREE* | S1115 Angle | 3130-15 | 1 1/2" | St. Steel | 1 | 15,369.00 |
|            | S1115 Angle | 3130-20 | 2"     |           | 1 | 16,208.00 |
|            | S1115 Angle | 3130-25 | 2 1/2" |           | 1 | 19,233.00 |
|            | S1115 Angle | 3130-30 | 3"     |           | 1 | 21,714.00 |

CF\*\* - Consult Factory

\*The wetted surface of this product contacted by consumable water contains less than 0.25% of lead by weight.

Consult factory for ordering code numbers of special models/options.

### Lead Free\* Series Materials of Construction

|                                    |   |
|------------------------------------|---|
| <b>Body &amp; Cover</b>            | Ductile Iron - NSF 61 Approved Fusion Bonded<br>Epoxy Coating (inside & outside) - (Watts Blue) |
| <b>Cover Bearing</b>               | Stainless Steel   |
| <b>Valve Trim</b>                  | Stainless Steel   |
| <b>Elastomers</b>                  | Buna-N (optional EPDM & Viton)  |
| <b>Tubing &amp; Fittings</b>       | Lead Free Brass with Copper Tubing (Stainless Optional)   |
| <b>Pressure Reducing Control</b>   | LF263AP - Lead Free Brass / Buna-N (options available)  |
| <b>Range</b>                       | 20-175psi 10-30psi (optional)   |
| <b>Pressure Relief Control</b>     | LFPV20C Lead Free Copper Silicon Alloy  |
| <b>Elastomer</b>                   | Buna-N -Standard; (options available)   |
| <b>Range</b>                       | 20-200psi (options available)   |
| <b>Pressure Sustaining Control</b> | LFPV20C Lead Free Copper Silicon Alloy  |
| <b>Elastomer</b>                   | Buna-N -Standard; (options available)   |
| <b>Range</b>                       | 20-200psi (options available)   |
| <b>Surge Control</b>               | LFPV20C Lead Free Copper Silicon Alloy  |
| <b>Elastomer</b>                   | Buna-N -Standard; (options available)   |
| <b>Range</b>                       | 20-200psi (options available)   |
| <b>Check Valves</b>                | Lead Free Copper Silicon Alloy (options available)  |
| <b>Solenoid Control</b>            | Stainless Steel   |

### Standard Production Valves:

**Globe pattern 1¼" – 8",  
Angle pattern 1¼" – 8",**

Ductile Iron body and cover with NSF Approved heat fusion bonded epoxy coated (inside & out), Long life non-edged stainless steel seat, FDA Approved Buna-N diaphragm, Top and bottom guided stem. Consult factory for specifications and ordering codes.

A number of models are now armed with ArmorTek®. Products are indicated by (●) in the model description.



\*The wetted surface of this product contacted by consumable water contains less than 0.25% of lead by weight.

Consult factory for ordering code numbers of special models/options.



| Model | Ordering Code | Size (in.) | Body | Qty. Per Carton | Weight Per Carton (lbs.) | List Price (each) |
|-------|---------------|------------|------|-----------------|--------------------------|-------------------|
|-------|---------------|------------|------|-----------------|--------------------------|-------------------|

### LFF110-10 Globe / LFF110-10 Angle

#### Float Control - Modulating (Constant Level) – 150# Flanged

| LEAD FREE*      | Model           | Ordering Code | Size (in.) | Body                          | Qty. Per Carton | Weight Per Carton (lbs.) | List Price (each) |
|-----------------|-----------------|---------------|------------|-------------------------------|-----------------|--------------------------|-------------------|
|                 | LFF110-10 Globe | T766708       | 1 1/2"     | Ductile Iron w LF Brass Pilot | 1               | 25                       | 7,967.00          |
|                 | LFF110-10 Globe | T860102       | 2"         |                               | 1               | 25                       | 8,014.00          |
|                 | LFF110-10 Globe | T722008       | 2 1/2"     |                               | 1               | 60                       | 9,020.00          |
|                 | LFF110-10 Globe | 4480-06       | 4"         |                               | 1               | 100                      | 12,681.00         |
|                 | LFF110-10 Globe | 4481-03       | 6"         |                               | 1               | 195                      | 17,805.00         |
| LFF110-10 Globe | CF**            | 8"            | 1          |                               | 415             | CF**                     |                   |

#### Float Control - Modulating (Constant Level) – 300# Flanged

| LEAD FREE*      | Model           | Ordering Code | Size (in.) | Body                          | Qty. Per Carton | Weight Per Carton (lbs.) | List Price (each) |
|-----------------|-----------------|---------------|------------|-------------------------------|-----------------|--------------------------|-------------------|
|                 | LFF110-10 Globe | CF**          | 2"         | Ductile Iron w LF Brass Pilot | 1               | 25                       | CF**              |
|                 | LFF110-10 Globe | CF**          | 3"         |                               | 1               | 60                       | CF**              |
|                 | LFF110-10 Globe | CF**          | 4"         |                               | 1               | 100                      | CF**              |
|                 | LFF110-10 Globe | CF**          | 6"         |                               | 1               | 195                      | CF**              |
| LFF110-10 Globe | CF**            | 8"            | 1          |                               | 415             | CF**                     |                   |

#### Float Control - Modulating (Constant Level) – Threaded

| LEAD FREE*      | Model           | Ordering Code | Size (in.) | Body                          | Qty. Per Carton | Weight Per Carton (lbs.) | List Price (each) |
|-----------------|-----------------|---------------|------------|-------------------------------|-----------------|--------------------------|-------------------|
|                 | LFF110-10 Globe | T784605       | 1 1/4"     | Ductile Iron w LF Brass Pilot | 1               | 25                       | 7,509.00          |
|                 | LFF110-10 Globe | T526912       | 1 1/2"     |                               | 1               | 25                       | 8,294.00          |
|                 | LFF110-10 Globe | T013806       | 2"         |                               | 1               | 25                       | 7,637.00          |
|                 | LFF110-10 Globe | T722009       | 2 1/2"     |                               | 1               | 60                       | 8,958.00          |
| LFF110-10 Globe | CF**            | 3"            | 1          |                               | 60              | CF**                     |                   |

CF\*\* - Consult Factory

For Angle Valves List Price is the Same as Globe Valves - Consult Factory for Ordering Code

| Model | Ordering Code | Size (in.) | Body | Qty. Per Carton | Weight Per Carton (lbs.) | List Price (each) |
|-------|---------------|------------|------|-----------------|--------------------------|-------------------|
|-------|---------------|------------|------|-----------------|--------------------------|-------------------|

### LFF110-14 Globe / LFF110-14 Angle On/Off (open/closed)

#### Float Control Valve (Adjustable Hi/Lo level) On/Off Float Valve – 150# Flanged

| LEAD FREE*      | Model           | Ordering Code | Size (in.) | Body                    | Qty. Per Carton | Weight Per Carton (lbs.) | List Price (each) |
|-----------------|-----------------|---------------|------------|-------------------------|-----------------|--------------------------|-------------------|
|                 | LFF110-14 Globe | CF**          | 1 1/2"     | Ductile Iron w SS Pilot | 1               | 35                       | CF**              |
|                 | LFF110-14 Globe | T689021       | 2"         |                         | 1               | 35                       | 6,069.00          |
|                 | LFF110-14 Globe | T065403       | 2 1/2"     |                         | 1               | 70                       | 7,275.00          |
|                 | LFF110-14 Globe | 6834-04       | 3"         |                         | 1               | 70                       | 7,460.00          |
| LFF110-14 Globe | 7420-08         | 4"            | 1          |                         | 110             | 10,293.00                |                   |

#### Float Control Valve (Adjustable Hi/Lo level) On/Off Float Valve – 300# Flanged

| LEAD FREE*      | Model           | Ordering Code | Size (in.) | Body                    | Qty. Per Carton | Weight Per Carton (lbs.) | List Price (each) |
|-----------------|-----------------|---------------|------------|-------------------------|-----------------|--------------------------|-------------------|
|                 | LFF110-14 Globe | CF**          | 2"         | Ductile Iron w SS Pilot | 1               | 35                       | CF**              |
|                 | LFF110-14 Globe | CF**          | 3"         |                         | 1               | 70                       | CF**              |
|                 | LFF110-14 Globe | CF**          | 4"         |                         | 1               | 110                      | CF**              |
|                 | LFF110-14 Globe | CF**          | 6"         |                         | 1               | 220                      | CF**              |
| LFF110-14 Globe | CF**            | 8"            | 1          |                         | 425             | CF**                     |                   |

#### Float Control Valve (Adjustable Hi/Lo level) On/Off Float Valve – Threaded

| LEAD FREE*      | Model           | Ordering Code | Size (in.) | Body                    | Qty. Per Carton | Weight Per Carton (lbs.) | List Price (each) |
|-----------------|-----------------|---------------|------------|-------------------------|-----------------|--------------------------|-------------------|
|                 | LFF110-14 Globe | T713315       | 1 1/4"     | Ductile Iron w SS Pilot | 1               | 35                       | 5,320.00          |
|                 | LFF110-14 Globe | T259910       | 1 1/2"     |                         | 1               | 35                       | 5,371.00          |
|                 | LFF110-14 Globe | T689016       | 2"         |                         | 1               | 35                       | 6,267.00          |
|                 | LFF110-14 Globe | CF**          | 2 1/2"     |                         | 1               | 70                       | CF**              |
| LFF110-14 Globe | CF**            | 3"            | 1          |                         | 70              | CF**                     |                   |

CF\*\* - Consult Factory

For Angle Valves List Price is the Same as Globe Valves - Consult Factory for Ordering Code

Valve standard with stainless rods/plastic float. Size 2" - 6" std. with (2) 12" rods. Sizes 8" - 16" std. with (4) 12" rods.

Additional Rods: LF Series Stainless Steel 12", see ACV options

\*The wetted surface of this product contacted by consumable water contains less than 0.25% of lead by weight.

Consult factory for ordering code numbers of special models/options.



| Model | Ordering Code | Size (in.) | Body | Qty. Per Carton | Weight Per Carton (lbs.) | List Price (each) |
|-------|---------------|------------|------|-----------------|--------------------------|-------------------|
|-------|---------------|------------|------|-----------------|--------------------------|-------------------|

### LFF113FP ACV Flood Protection Shutdown Control Valve with SentryPlus Alert® Technology

#### Flood Protection Shutdown Control Valve - 150# Flange, Flood Sensor and Relay Box

| Model        | Ordering Code | Size (in.) | Body                    | Qty. Per Carton | Weight Per Carton (lbs.) | List Price (each) |
|--------------|---------------|------------|-------------------------|-----------------|--------------------------|-------------------|
| LFF113FP-FP2 | F8800-14      | 2"         | Ductile Iron w SS Pilot | 1               | 50                       | 24,622.00         |
| LFF113FP-FP2 | F8800-15      | 2 1/2"     |                         | 1               | 65                       | 24,656.00         |
| LFF113FP-FP2 | F8800-16      | 3"         |                         | 1               | 92                       | 25,187.00         |
| LFF113FP-FP2 | F8800-17      | 4"         |                         | 1               | 125                      | 29,747.00         |
| LFF113FP-FP2 | F8800-18      | 6"         |                         | 1               | 255                      | 32,455.00         |
| LFF113FP-FP2 | F8800-19      | 8"         |                         | 1               | 1000                     | 34,846.00         |

#### Flood Protection Shutdown Control Valve - w/Threaded Connection, Flood Sensor and Relay Box

| Model        | Ordering Code | Size (in.) | Body                    | Qty. Per Carton | Weight Per Carton (lbs.) | List Price (each) |
|--------------|---------------|------------|-------------------------|-----------------|--------------------------|-------------------|
| LFF113FP-FP2 | F8800-11      | 1 1/4"     | Ductile Iron w SS Pilot | 1               | 35                       | 23,763.00         |
| LFF113FP-FP2 | F8800-12      | 1 1/2"     |                         | 1               | 35                       | 23,763.00         |
| LFF113FP-FP2 | F8800-13      | 2"         |                         | 1               | 50                       | 24,572.00         |

CF\*\*- Consult Factory

For Angle Valves List Price is the Same as Globe Valves - Consult Factory for Ordering Code



| Model | Ordering Code | Size (in.) | Body | Qty. Per Carton | Weight Per Carton (lbs.) | List Price (each) |
|-------|---------------|------------|------|-----------------|--------------------------|-------------------|
|-------|---------------|------------|------|-----------------|--------------------------|-------------------|

### LFF115 Globe / LFF1115 Angle

#### Pressure Reducing Control Valve (20 - 175 psi Pilot adjustment range) – 150# Flanged

| Model          | Ordering Code | Size (in.) | Body                          | Qty. Per Carton | Weight Per Carton (lbs.) | List Price (each) |
|----------------|---------------|------------|-------------------------------|-----------------|--------------------------|-------------------|
| LFF115 Globe • | 2GE00003      | 1 1/2"     | Ductile Iron w LF Brass Pilot | 1               | 35                       | 6,290.00          |
| LFF115 Globe • | 2GE00005      | 2"         |                               | 1               | 35                       | 7,704.00          |
| LFF115 Globe • | 2GE00008      | 2 1/2"     |                               | 1               | 70                       | 7,937.00          |
| LFF115 Globe • | 2GE00010      | 3"         |                               | 1               | 70                       | 8,260.00          |
| LFF115 Globe • | 2GE00012      | 4"         |                               | 1               | 120                      | 10,610.00         |
| LFF115 Globe • | 2GE00014      | 6"         |                               | 1               | 220                      | 16,064.00         |
| LFF115 Globe • | 2GE00016      | 8"         |                               | 1               | 425                      | 27,509.00         |

#### Pressure Reducing Control Valve (20 - 175 psi Pilot adjustment range) – 300# Flanged

| Model          | Ordering Code | Size (in.) | Body                          | Qty. Per Carton | Weight Per Carton (lbs.) | List Price (each) |
|----------------|---------------|------------|-------------------------------|-----------------|--------------------------|-------------------|
| LFF115 Globe • | 2GE00011      | 3"         | Ductile Iron w LF Brass Pilot | 1               | 70                       | 8,588.00          |
| LFF115 Globe • | 2GE00013      | 4"         |                               | 1               | 120                      | CF**              |

#### Pressure Reducing Control Valve (20 - 175 psi Pilot adjustment range) – Threaded

| Model          | Ordering Code | Size (in.) | Body                          | Qty. Per Carton | Weight Per Carton (lbs.) | List Price (each) |
|----------------|---------------|------------|-------------------------------|-----------------|--------------------------|-------------------|
| LFF115 Globe • | 2GE00001      | 1 1/4"     | Ductile Iron w LF Brass Pilot | 1               | 35                       | 5,975.00          |
| LFF115 Globe • | 2GE00002      | 1 1/2"     |                               | 1               | 35                       | 5,975.00          |
| LFF115 Globe • | 2GE00004      | 2"         |                               | 1               | 35                       | 6,114.00          |
| LFF115 Globe • | 2GE00007      | 2 1/2"     |                               | 1               | 70                       | 7,484.00          |
| LFF115 Globe • | 2GE00009      | 3"         |                               | 1               | 70                       | 7,668.00          |

CF\*\*- Consult Factory

For Angle Valves List Price is the Same as Globe Valves- Consult Factory for Ordering Code

Optional 100-300 psi range. See ACV options

•This ACV is armed with ArmorTek®, a patented 3-part advanced epoxy coating system designed to limit both microbial induced (MIC) and exposed metal substrate corrosion.

\*The wetted surface of this product contacted by consumable water contains less than 0.25% of lead by weight.

Consult factory for ordering code numbers of special models/options.

| Model | Ordering Code | Size (in.) | Body | Qty. Per Carton | Weight Per Carton (lbs.) | List Price (each) |
|-------|---------------|------------|------|-----------------|--------------------------|-------------------|
|-------|---------------|------------|------|-----------------|--------------------------|-------------------|

### LFF115-2 Globe / LFF1115-2 Angle

#### Pressure Reducing and (Back Pressure) Sustaining Control Valve (20 - 175 psi Pilot adjustment range) – 150# Flanged

| LEAD FREE*     | Model            | Ordering Code | Size (in.) | Body                          | Qty. Per Carton | Weight Per Carton (lbs.) | List Price (each) |
|----------------|------------------|---------------|------------|-------------------------------|-----------------|--------------------------|-------------------|
|                | LFF115-2 Globe   | T873008       | 1 1/2"     | Ductile Iron w LF Brass Pilot | 1               | 35                       | 8,640.00          |
|                | LFF115-2 Globe   | T206103       | 2"         |                               | 1               | 35                       | 8,892.00          |
|                | LFF115-2 Globe   | T204503       | 2 1/2"     |                               | 1               | 70                       | 9,900.00          |
|                | LFF115-2 Globe   | 2049-03       | 3"         |                               | 1               | 70                       | 10,637.00         |
|                | LFF115-2 Globe • | 2GE00029      | 4"         |                               | 1               | 120                      | 12,871.00         |
|                | LFF115-2 Globe   | 2054-04       | 6"         |                               | 1               | 220                      | 17,951.00         |
| LFF115-2 Globe | 8890-06          | 8"            | 1          |                               | 425             | 30,524.00                |                   |

#### Pressure Reducing and (Back Pressure) Sustaining Control Valve (20 - 175 psi Pilot adjustment range) – 300# Flanged

| LEAD FREE*     | Model          | Ordering Code | Size (in.) | Body                          | Qty. Per Carton | Weight Per Carton (lbs.) | List Price (each) |
|----------------|----------------|---------------|------------|-------------------------------|-----------------|--------------------------|-------------------|
|                | LFF115-2 Globe | CF**          | 2"         | Ductile Iron w LF Brass Pilot | 1               | 35                       | CF**              |
|                | LFF115-2 Globe | CF**          | 3"         |                               | 1               | 70                       | CF**              |
|                | LFF115-2 Globe | CF**          | 4"         |                               | 1               | 120                      | CF**              |
|                | LFF115-2 Globe | CF**          | 6"         |                               | 1               | 220                      | CF**              |
| LFF115-2 Globe | CF**           | 8"            | 1          |                               | 425             | CF**                     |                   |

#### Pressure Reducing and (Back Pressure) Sustaining Control Valve (20 - 175 psi Pilot adjustment range) – Threaded

| LEAD FREE*     | Model          | Ordering Code | Size (in.) | Body                          | Qty. Per Carton | Weight Per Carton (lbs.) | List Price (each) |
|----------------|----------------|---------------|------------|-------------------------------|-----------------|--------------------------|-------------------|
|                | LFF115-2 Globe | T203603       | 1 1/4"     | Ductile Iron w LF Brass Pilot | 1               | 35                       | 8,369.00          |
|                | LFF115-2 Globe | T203803       | 1 1/2"     |                               | 1               | 35                       | 8,414.00          |
|                | LFF115-2 Globe | T204003       | 2"         |                               | 1               | 35                       | 8,512.00          |
|                | LFF115-2 Globe | T099303       | 2 1/2"     |                               | 1               | 70                       | 9,826.00          |
| LFF115-2 Globe | 2048-03        | 3"            | 1          |                               | 70              | 10,134.00                |                   |

CF\*\* - Consult Factory

For Angle Valves List Price is the Same as Globe Valves- Consult Factory for Ordering Code

Optional 100-300 psi range. See ACV options

•This ACV is armed with ArmorTek®, a patented 3-part advanced epoxy coating system designed to limit both microbial induced (MIC) and exposed metal substrate corrosion.

| Model | Ordering Code | Size (in.) | Body | Qty. Per Carton | Weight Per Carton (lbs.) | List Price (each) |
|-------|---------------|------------|------|-----------------|--------------------------|-------------------|
|-------|---------------|------------|------|-----------------|--------------------------|-------------------|

### LFF115-3 Globe / LFF1115-3 Angle

#### Pressure Reducing and Check Valve (20 - 175 psi Pilot adjustment range) – 150# Flanged

| LEAD FREE*     | Model          | Ordering Code | Size (in.) | Body                          | Qty. Per Carton | Weight Per Carton (lbs.) | List Price (each) |
|----------------|----------------|---------------|------------|-------------------------------|-----------------|--------------------------|-------------------|
|                | LFF115-3 Globe | T761808       | 1 1/2"     | Ductile Iron w LF Brass Pilot | 1               | 35                       | 7,722.00          |
|                | LFF115-3 Globe | T207703       | 2"         |                               | 1               | 35                       | 8,906.00          |
|                | LFF115-3 Globe | T208103       | 2 1/2"     |                               | 1               | 70                       | 9,201.00          |
|                | LFF115-3 Globe | 2085-03       | 3"         |                               | 1               | 70                       | 9,485.00          |
|                | LFF115-3 Globe | 2088-06       | 4"         |                               | 1               | 120                      | 11,822.00         |
| LFF115-3 Globe | 7981-04        | 8"            | 1          |                               | 425             | 27,929.00                |                   |

#### Pressure Reducing and Check Valve (20 - 175 psi Pilot adjustment range) – 300# Flanged

| LEAD FREE*     | Model          | Ordering Code | Size (in.) | Body                          | Qty. Per Carton | Weight Per Carton (lbs.) | List Price (each) |
|----------------|----------------|---------------|------------|-------------------------------|-----------------|--------------------------|-------------------|
|                | LFF115-3 Globe | CF**          | 2"         | Ductile Iron w LF Brass Pilot | 1               | 35                       | CF**              |
|                | LFF115-3 Globe | 8096-04       | 3"         |                               | 1               | 70                       | 10,114.00         |
|                | LFF115-3 Globe | CF**          | 4"         |                               | 1               | 120                      | CF**              |
|                | LFF115-3 Globe | CF**          | 6"         |                               | 1               | 220                      | CF**              |
| LFF115-3 Globe | 7564-08        | 8"            | 1          |                               | 425             | 33,438.00                |                   |

#### Pressure Reducing and Check Valve (20 - 175 psi Pilot adjustment range) – Threaded

| LEAD FREE*     | Model          | Ordering Code | Size (in.) | Body                          | Qty. Per Carton | Weight Per Carton (lbs.) | List Price (each) |
|----------------|----------------|---------------|------------|-------------------------------|-----------------|--------------------------|-------------------|
|                | LFF115-3 Globe | T853609       | 1 1/4"     | Ductile Iron w LF Brass Pilot | 1               | 35                       | 7,182.00          |
|                | LFF115-3 Globe | VT207603      | 2"         |                               | 1               | 35                       | 7,314.00          |
|                | LFF115-3 Globe | T721128       | 2 1/2"     |                               | 1               | 70                       | 8,707.00          |
| LFF115-3 Globe | 2084-03        | 3"            | 1          |                               | 70              | 8,886.00                 |                   |

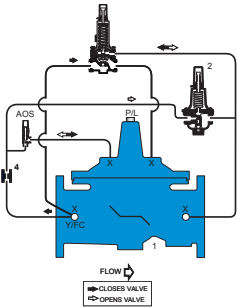
CF\*\* - Consult Factory

For Angle Valves List Price is the Same as Globe Valves- Consult Factory for Ordering Code

Optional 100-300 psi range. See ACV options

\*The wetted surface of this product contacted by consumable water contains less than 0.25% of lead by weight.

Consult factory for ordering code numbers of special models/options.



### LFF115-7 Globe / LFF115-7 Angle

#### Pressure Reducing and Downstream Surge Control Valve (20 - 175 psi Pilot adjustment range) – 150# Flanged

| Model                | Ordering Code | Size (in.) | Body                          | Qty. Per Carton | Weight Per Carton (lbs.) | List Price (each) |
|----------------------|---------------|------------|-------------------------------|-----------------|--------------------------|-------------------|
| LFF115-7 Globe       | CF**          | 1 1/2"     |                               | 1               | 35                       | CF**              |
| LFF115-7 Globe       | T211303       | 2"         |                               | 1               | 35                       | 8,906.00          |
| LFF115-7 Globe       | T211703       | 2 1/2"     |                               | 1               | 70                       | 9,900.00          |
| LFF115-7 Globe Class | 2124-05       | 4"         | Ductile Iron w LF Brass Pilot | 1               | 120                      | 11,989.00         |
| LFF115-7 Globe Class | CF**          | 4"         |                               | 1               | 120                      | CF**              |
| LFF115-7 Globe Class | CF**          | 6"         |                               | 1               | 220                      | CF**              |
| LFF115-7 Globe Class | 8776-07       | 8"         |                               | 1               | 425                      | 29,744.00         |
| LFF115-7 Globe Class | CF**          | 8"         |                               | 1               | 425                      | CF**              |

#### Pressure Reducing and Downstream Surge Control Valve (20 - 175 psi Pilot adjustment range) – 300# Flanged

|                |      |    |                               |   |    |      |
|----------------|------|----|-------------------------------|---|----|------|
| LFF115-7 Globe | CF** | 2" | Ductile Iron w LF Brass Pilot | 1 | 35 | CF** |
| LFF115-7 Globe | CF** | 3" |                               | 1 | 70 | CF** |

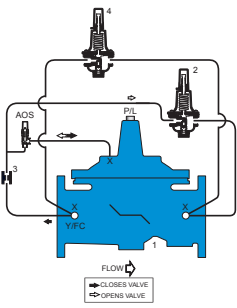
#### Pressure Reducing and Downstream Surge Control Valve (20 - 175 psi Pilot adjustment range) – Threaded

|                |         |        |                               |   |    |           |
|----------------|---------|--------|-------------------------------|---|----|-----------|
| LFF115-7 Globe | T210803 | 1 1/4" |                               | 1 | 35 | 8,369.00  |
| LFF115-7 Globe | T211003 | 1 1/2" |                               | 1 | 35 | 8,414.00  |
| LFF115-7 Globe | T211203 | 2"     | Ductile Iron w LF Brass Pilot | 1 | 35 | 8,512.00  |
| LFF115-7 Globe | T849215 | 2 1/2" |                               | 1 | 70 | 9,827.00  |
| LFF115-7 Globe | 8918-16 | 3"     |                               | 1 | 70 | 10,811.00 |

CF\*\* - Consult Factory

For Threaded Angle Valves List Price is the Same as Globe Valves- Consult Factory for Ordering Code

Optional 100-300 psi range. See ACV options



### LFF115-74 Globe / LFF115-74 Angle

#### Pressure Reducing Control Valve with Low Flow By-Pass (20 - 175 psi Pilot adjustment range) – 150# Flanged

|                   |          |        |                               |   |     |           |
|-------------------|----------|--------|-------------------------------|---|-----|-----------|
| LFF115-74 Globe • | 2GE00071 | 1 1/2" |                               | 1 | 40  | 7,304.00  |
| LFF115-74 Globe • | 2GE00073 | 2"     |                               | 1 | 40  | 8,313.00  |
| LFF115-74 Globe • | 2GE00076 | 2 1/2" | Ductile Iron w LF Brass Pilot | 1 | 75  | 8,618.00  |
| LFF115-74 Globe • | 2GE00078 | 3"     |                               | 1 | 75  | 8,910.00  |
| LFF115-74 Globe • | 2GE00080 | 4"     |                               | 1 | 125 | 10,913.00 |
| LFF115-74 Globe • | 2GE00082 | 6"     |                               | 1 | 230 | 15,885.00 |

#### Pressure Reducing Control Valve with Low Flow By-Pass (20 - 175 psi Pilot adjustment range) – 300# Flanged

|                   |          |    |                               |   |     |           |
|-------------------|----------|----|-------------------------------|---|-----|-----------|
| LFF115-74 Globe • | 2GE00074 | 2" |                               | 1 | 40  | 10,255.00 |
| LFF115-74 Globe • | 2GE00079 | 3" | Ductile Iron w LF Brass Pilot | 1 | 75  | CF**      |
| LFF115-74 Globe • | 2GE00083 | 6" |                               | 1 | 230 | CF**      |

#### Pressure Reducing Control Valve with Low Flow By-Pass (20 - 175 psi Pilot adjustment range) – Threaded

|                   |          |        |                               |   |    |          |
|-------------------|----------|--------|-------------------------------|---|----|----------|
| LFF115-74 Globe • | 2GE00069 | 1 1/4" |                               | 1 | 40 | 7,299.00 |
| LFF115-74 Globe • | 2GE00070 | 1 1/2" | Ductile Iron w LF Brass Pilot | 1 | 40 | 7,304.00 |
| LFF115-74 Globe • | 2GE00072 | 2"     |                               | 1 | 40 | 7,428.00 |

CF\*\* - Consult Factory

For Angle Valves List Price is the Same as Globe Valves- Consult Factory for Ordering Code

Optional 100-300 psi range. See ACV options

•This ACV is armed with ArmorTek®, a patented 3-part advanced epoxy coating system designed to limit both microbial induced (MIC) and exposed metal substrate corrosion.

\*The wetted surface of this product contacted by consumable water contains less than 0.25% of lead by weight.

Consult factory for ordering code numbers of special models/options.

| Model | Ordering Code | Size (in.) | Body | Qty. Per Carton | Weight Per Carton (lbs.) | List Price (each) |
|-------|---------------|------------|------|-----------------|--------------------------|-------------------|
|-------|---------------|------------|------|-----------------|--------------------------|-------------------|

### "JM" Series Pressure Reducing Control Valves

Special 12 1/4" lay length to match 4" Watts Regulator Model 127W direct acting pressure reducing valve for retrofit applications. End Connection: 150# ANSI Flanged

Globe pattern, reduced port, ductile iron body and cover with NSF Approved heat fusion bonded epoxy coating (100% inside and out). Exclusive "Quad Seal" seat disc for positive drip-tight closure. Long life non-edged stainless steel seat, FDA Approved Buna-N diaphragm, Top and bottom guided stem with position indicator, Pilot system isolation ball valves and Upstream and Downstream gauge connections. Downstream pressure adjustment range: 30-300psi."

#### LFF6115-JM

##### Pressure Reducing Control Valve (flow range: 30 - 580 gpm)

|            |            |         |    |   |   |    |           |
|------------|------------|---------|----|---|---|----|-----------|
| LEAD FREE* | LFF6115-JM | V234801 | 4" | 1 | 1 | 93 | 10,718.00 |
|------------|------------|---------|----|---|---|----|-----------|

##### Pressure Reducing and Downstream Surge Control Valve (flow range: 30 - 580 gpm)

|            |             |         |    |   |   |     |           |
|------------|-------------|---------|----|---|---|-----|-----------|
| LEAD FREE* | LFF6115-7JM | V234802 | 4" | 1 | 1 | 135 | 12,510.00 |
|------------|-------------|---------|----|---|---|-----|-----------|

##### Pressure Reducing Control Valve w/ 3/4" 223HP Low Flow (flow range: 1 - 580 gpm)

|            |              |         |    |   |   |     |           |
|------------|--------------|---------|----|---|---|-----|-----------|
| LEAD FREE* | LFF6115-74JM | V234803 | 4" | 1 | 1 | 130 | 12,665.00 |
|------------|--------------|---------|----|---|---|-----|-----------|

| Model | Ordering Code | Size (in.) | Body | Qty. Per Carton | Weight Per Carton (lbs.) | List Price (each) |
|-------|---------------|------------|------|-----------------|--------------------------|-------------------|
|-------|---------------|------------|------|-----------------|--------------------------|-------------------|

#### LFF116 Globe / LFF116 Angle

##### Pressure Relief, Sustaining or Backpressure Control Valve (20 - 200 psi Pilot adjustment range) - 150# Flanged

|                |                |          |        |                               |           |     |           |
|----------------|----------------|----------|--------|-------------------------------|-----------|-----|-----------|
| LEAD FREE*     | LFF116 Globe • | 2GK00003 | 1 1/2" | Ductile Iron w LF Brass Pilot | 1         | 35  | 7,485.00  |
|                | LFF116 Globe • | 2GK00005 | 2"     |                               | 1         | 35  | 7,591.00  |
|                | LFF116 Globe • | 2GK00008 | 2 1/2" |                               | 1         | 70  | 8,014.00  |
|                | LFF116 Globe • | 2GK00010 | 3"     |                               | 1         | 70  | 8,763.00  |
|                | LFF116 Globe • | 2GK00012 | 4"     |                               | 1         | 120 | 12,610.00 |
|                | LFF116 Globe • | 2GK00014 | 6"     |                               | 1         | 220 | 17,741.00 |
| LFF116 Globe • | 2GK00016       | 8"       | 1      | 425                           | 28,987.00 |     |           |

##### Pressure Relief, Sustaining or Backpressure Control Valve (20 - 200 psi Pilot adjustment range) - 300# Flanged

|            |                |          |    |                               |   |     |           |
|------------|----------------|----------|----|-------------------------------|---|-----|-----------|
| LEAD FREE* | LFF116 Globe • | 2GK00006 | 2" | Ductile Iron w LF Brass Pilot | 1 | 35  | 7,460.00  |
|            | LFF116 Globe • | 2GK00011 | 3" |                               | 1 | 70  | 9,562.00  |
|            | LFF116 Globe • | 2GK00013 | 4" |                               | 1 | 120 | 13,346.00 |
|            | LFF116 Globe • | 2GK00015 | 6" |                               | 1 | 220 | 20,227.00 |
|            | LFF116 Globe • | 2GK00017 | 8" |                               | 1 | 425 | 31,833.00 |

##### Pressure Relief, Sustaining or Backpressure Control Valve (20 - 200 psi Pilot adjustment range) - Threaded

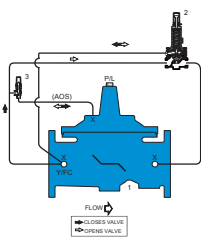
|            |                |          |        |                               |   |    |          |
|------------|----------------|----------|--------|-------------------------------|---|----|----------|
| LEAD FREE* | LFF116 Globe • | 2GK00001 | 1 1/4" | Ductile Iron w LF Brass Pilot | 1 | 35 | 6,349.00 |
|            | LFF116 Globe • | 2GK00002 | 1 1/2" |                               | 1 | 35 | 6,349.00 |
|            | LFF116 Globe • | 2GK00004 | 2"     |                               | 1 | 35 | 6,517.00 |
|            | LFF116 Globe • | 2GK00007 | 2 1/2" |                               | 1 | 70 | 7,902.00 |
|            | LFF116 Globe • | 2GK00009 | 3"     |                               | 1 | 70 | 8,353.00 |

CF\*\* - Consult Factory

For Angle Valves List Price is the Same as Globe Valves- Consult Factory for Ordering Code

Optional 100-300 psi range. See ACV options

•This ACV is armed with ArmorTek®, a patented 3-part advanced epoxy coating system designed to limit both microbial induced (MIC) and exposed metal substrate corrosion.



\*The wetted surface of this product contacted by consumable water contains less than 0.25% of lead by weight.

Consult factory for ordering code numbers of special models/options.

| Model | Ordering Code | Size (in.) | Body | Qty. Per Carton | Weight Per Carton (lbs.) | List Price (each) |
|-------|---------------|------------|------|-----------------|--------------------------|-------------------|
|-------|---------------|------------|------|-----------------|--------------------------|-------------------|

### LFF116-BT Globe / LFF1116-BT Angle

Available in sizes 1 1/4" - 6". Price includes Basic Valve with anti-scale trim (Xylan coated seat and stem), Position Indicator, Heavy cover spring, and Manual reset.

#### High Pressure Safety Shutoff Valve (20 - 200 psi Pilot adjustment range) – 150# Flanged

| LEAD FREE*      | Model           | Ordering Code | Size (in.) | Body                          | Qty. Per Carton | Weight Per Carton (lbs.) | List Price (each) |
|-----------------|-----------------|---------------|------------|-------------------------------|-----------------|--------------------------|-------------------|
|                 | LFF116-BT Globe | CF**          | 1 1/2"     | Ductile Iron w LF Brass Pilot | 1               | 35                       | CF**              |
|                 | LFF116-BT Globe | CF**          | 2"         |                               | 1               | 35                       | CF**              |
|                 | LFF116-BT Globe | CF**          | 2 1/2"     |                               | 1               | 70                       | CF**              |
|                 | LFF116-BT Globe | CF**          | 3"         |                               | 1               | 70                       | CF**              |
|                 | LFF116-BT Globe | CF**          | 4"         |                               | 1               | 120                      | CF**              |
| LFF116-BT Globe | CF**            | 6"            | 1          |                               | 220             | CF**                     |                   |

#### High Pressure Safety Shutoff Valve (20 - 200 psi Pilot adjustment range) – 300# Flanged

| LEAD FREE*      | Model           | Ordering Code | Size (in.) | Body                          | Qty. Per Carton | Weight Per Carton (lbs.) | List Price (each) |
|-----------------|-----------------|---------------|------------|-------------------------------|-----------------|--------------------------|-------------------|
|                 | LFF116-BT Globe | CF**          | 2"         | Ductile Iron w LF Brass Pilot | 1               | 35                       | CF**              |
|                 | LFF116-BT Globe | CF**          | 3"         |                               | 1               | 70                       | CF**              |
|                 | LFF116-BT Globe | CF**          | 4"         |                               | 1               | 120                      | CF**              |
| LFF116-BT Globe | CF**            | 6"            | 1          |                               | 220             | CF**                     |                   |

#### High Pressure Safety Shutoff Valve (20 - 200 psi Pilot adjustment range) – Threaded

| LEAD FREE*      | Model           | Ordering Code | Size (in.) | Body                          | Qty. Per Carton | Weight Per Carton (lbs.) | List Price (each) |
|-----------------|-----------------|---------------|------------|-------------------------------|-----------------|--------------------------|-------------------|
|                 | LFF116-BT Globe | CF**          | 1 1/4"     | Ductile Iron w LF Brass Pilot | 1               | 35                       | CF**              |
|                 | LFF116-BT Globe | CF**          | 1 1/2"     |                               | 1               | 35                       | CF**              |
|                 | LFF116-BT Globe | CF**          | 2"         |                               | 1               | 35                       | CF**              |
|                 | LFF116-BT Globe | CF**          | 2 1/2"     |                               | 1               | 70                       | CF**              |
| LFF116-BT Globe | CF**            | 3"            | 1          |                               | 70              | CF**                     |                   |

CF\*\* - Consult Factory

### ACV Options (F series): List Price Adders

| Model                | Size (in.) | Description        | Qty. Per Carton | Weight Per Carton (lbs.) | List Price (each) |
|----------------------|------------|--------------------|-----------------|--------------------------|-------------------|
| LFF110-14/LFF1110-14 | All        | Float Rods         | -               | -                        | Add \$95.50       |
| LFF115/LFF1115       | All        | 100-300 PSIG Range | -               | -                        | Add \$388.25      |
| LFF115-2/LFF1115-2   | All        | 100-300 PSIG Range | -               | -                        | Add \$388.25      |
| LFF115-7/LFF1115-7   | All        | 100-300 PSIG Range | -               | -                        | Add \$388.25      |
| LFF115-74/LFF1115-74 | All        | 100-300 PSIG Range | -               | -                        | Add \$388.25      |
| LFF116/LFF1116       | All        | 100-300 PSIG Range | -               | -                        | Add \$388.25      |

\*The wetted surface of this product contacted by consumable water contains less than 0.25% of lead by weight.

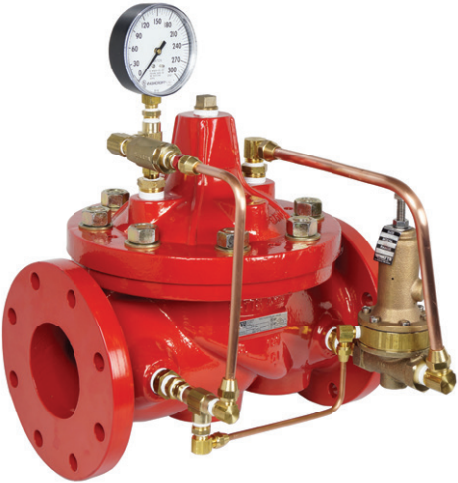
Consult factory for ordering code numbers of special models/options.

| Lead Free* Series Materials of Construction |   |
|---|---|
| Body & Cover                                | Ductile Iron - Fused Red Epoxy (inside and out)             |
| Cover Bearing                               | Stainless Steel   |
| Valve Trim                                  | Stainless Steel, Xylan coated (optional)                    |
| Stem  | Stainless Steel, Xylan coated (optional)                    |
| Elastomers                                  | Buna-N  |
| Tubing & Fittings                           | Lead Free Brass with Copper Tubing (Stainless Optional)     |
| Pressure Gauges                             | UL / FM Approved  |
| Pressure Reducing Control                   | LFCP15 - Lead Free Brass                                    |
| Elastometer                                 | Buna-N  |
| Range                                       | 30-300psig  |
| Pressure Relief Control                     | LFPV20C - Lead Free Copper Silicon Alloy                    |
| Elastometer                                 | Buna-N  |
| Range                                       | 20-200 psig/ 100-300 psig                                   |
| Deluge Valve                                | F100M Control Pilot, Solenoid control (Electrical actuated) |
| Elastometer                                 | Buna-N  |
| M.W.P (UL Listed)                           | 175 psig  |
| Pump Suction Control                        | LFPV20C - Lead Free Copper Silicon Alloy                    |
| Elastometer                                 | Buna-N  |
| Range                                       | 0-30 psig   |

**Standard Production Valves:**

**Globe pattern Upto 8",  
Angle pattern Upto 8",**

Ductile Iron body and cover with heat fusion bonded epoxy coated (inside & out), Long life non-edged stainless steel seat, Pressure gages, Buna-N diaphragm, Top and bottom guided stem and Flo-clean strainers. UL/ FM approved for Fire applications.



\*The wetted surface of this product contacted by consumable water contains less than 0.25% of lead by weight.  
Consult factory for ordering code numbers of special models/options.



| Model | Ordering Code | Size (in.) | Body | Qty. Per Carton | Weight Per Carton (lbs.) | List Price (each) |
|-------|---------------|------------|------|-----------------|--------------------------|-------------------|
|-------|---------------|------------|------|-----------------|--------------------------|-------------------|

### M115F Globe

#### Pressure Reducing Valve - UL Listed - 150# Flanged

|            |             |         |    |              |   |     |           |
|------------|-------------|---------|----|--------------|---|-----|-----------|
| LEAD FREE* | M115F Globe | 4402-01 | 2" | Ductile Iron | 1 | 35  | 6,317.00  |
|            | M115F Globe | 4404-01 | 3" |              | 1 | 70  | 7,656.00  |
|            | M115F Globe | 4405-01 | 4" |              | 1 | 120 | 10,127.00 |
|            | M115F Globe | 4406-01 | 6" |              | 1 | 220 | 14,947.00 |
|            | M115F Globe | 4407-01 | 8" |              | 1 | 425 | 23,396.00 |

#### Pressure Reducing Valve - UL Listed - 300# Flanged

|            |             |         |        |              |   |     |           |
|------------|-------------|---------|--------|--------------|---|-----|-----------|
| LEAD FREE* | M115F Globe | 4402-02 | 2"     | Ductile Iron | 1 | 35  | 6,774.00  |
|            | M115F Globe | 4403-06 | 2 1/2" |              | 1 | 70  | 8,295.00  |
|            | M115F Globe | 4404-02 | 3"     |              | 1 | 70  | 8,681.00  |
|            | M115F Globe | 4405-02 | 4"     |              | 1 | 120 | 11,786.00 |
|            | M115F Globe | 4406-02 | 6"     |              | 1 | 220 | 15,692.00 |
|            | M115F Globe | 4407-02 | 8"     |              | 1 | 425 | 24,161.00 |

#### Pressure Reducing Valve - UL Listed - Threaded

|            |             |         |        |              |   |    |          |
|------------|-------------|---------|--------|--------------|---|----|----------|
| LEAD FREE* | M115F Globe | 4402-04 | 2"     | Ductile Iron | 1 | 35 | 5,530.00 |
|            | M115F Globe | 4403-04 | 2 1/2" |              | 1 | 70 | 6,822.00 |
|            | M115F Globe | 4404-04 | 3"     |              | 1 | 70 | 6,874.00 |

#### Pressure Reducing Valve - UL Listed - Grooved

|            |             |         |        |              |   |     |           |
|------------|-------------|---------|--------|--------------|---|-----|-----------|
| LEAD FREE* | M115F Globe | 4402-03 | 2"     | Ductile Iron | 1 | 35  | 6,317.00  |
|            | M115F Globe | 4403-07 | 2 1/2" |              | 1 | 70  | 7,129.00  |
|            | M115F Globe | 4404-03 | 3"     |              | 1 | 70  | 7,656.00  |
|            | M115F Globe | 4405-03 | 4"     |              | 1 | 120 | 10,127.00 |
|            | M115F Globe | 4406-03 | 6"     |              | 1 | 220 | 14,947.00 |
|            | M115F Globe | 4407-03 | 8"     |              | 1 | 425 | 23,396.00 |



| Model | Ordering Code | Size (in.) | Body | Qty. Per Carton | Weight Per Carton (lbs.) | List Price (each) |
|-------|---------------|------------|------|-----------------|--------------------------|-------------------|
|-------|---------------|------------|------|-----------------|--------------------------|-------------------|

### M1115F Angle

#### Pressure Reducing Valve - UL Listed - 150# Flanged

|            |              |         |        |              |   |     |           |
|------------|--------------|---------|--------|--------------|---|-----|-----------|
| LEAD FREE* | M1115F Angle | 4412-01 | 2"     | Ductile Iron | 1 | 35  | 6,317.00  |
|            | M1115F Angle | 4413-01 | 2 1/2" |              | 1 | 70  | 7,129.00  |
|            | M1115F Angle | 4414-01 | 3"     |              | 1 | 70  | 7,656.00  |
|            | M1115F Angle | 4415-01 | 4"     |              | 1 | 120 | 10,127.00 |
|            | M1115F Angle | 4416-01 | 6"     |              | 1 | 220 | 14,947.00 |
|            | M1115F Angle | 4417-01 | 8"     |              | 1 | 425 | 23,396.00 |

#### Pressure Reducing Valve - UL Listed - 300# Flanged

|            |              |         |        |              |   |     |           |
|------------|--------------|---------|--------|--------------|---|-----|-----------|
| LEAD FREE* | M1115F Angle | 4412-02 | 2"     | Ductile Iron | 1 | 35  | 6,774.00  |
|            | M1115F Angle | 4413-02 | 2 1/2" |              | 1 | 70  | 8,295.00  |
|            | M1115F Angle | 4414-02 | 3"     |              | 1 | 70  | 8,681.00  |
|            | M1115F Angle | 4415-02 | 4"     |              | 1 | 120 | 11,786.00 |
|            | M1115F Angle | 4416-02 | 6"     |              | 1 | 220 | 15,692.00 |
|            | M1115F Angle | 4417-02 | 8"     |              | 1 | 425 | 24,161.00 |

#### Pressure Reducing Valve - UL Listed - Threaded

|            |              |         |        |              |   |    |          |
|------------|--------------|---------|--------|--------------|---|----|----------|
| LEAD FREE* | M1115F Angle | 4412-04 | 2"     | Ductile Iron | 1 | 35 | 5,530.00 |
|            | M1115F Angle | 4413-04 | 2 1/2" |              | 1 | 70 | 6,822.00 |
|            | M1115F Angle | 4414-04 | 3"     |              | 1 | 70 | 6,874.00 |

#### Pressure Reducing Valve - UL Listed - Grooved

|            |              |         |        |              |   |     |           |
|------------|--------------|---------|--------|--------------|---|-----|-----------|
| LEAD FREE* | M1115F Angle | 4412-03 | 2"     | Ductile Iron | 1 | 35  | 6,317.00  |
|            | M1115F Angle | 4413-03 | 2 1/2" |              | 1 | 70  | 7,129.00  |
|            | M1115F Angle | 4414-03 | 3"     |              | 1 | 70  | 7,656.00  |
|            | M1115F Angle | 4415-03 | 4"     |              | 1 | 120 | 10,127.00 |

\*The wetted surface of this product contacted by consumable water contains less than 0.25% of lead by weight.

Consult factory for ordering code numbers of special models/options.



| Model | Ordering Code | Size (in.) | Body | Qty. Per Carton | Weight Per Carton (lbs.) | List Price (each) |
|-------|---------------|------------|------|-----------------|--------------------------|-------------------|
|-------|---------------|------------|------|-----------------|--------------------------|-------------------|

### M116FM Globe 20-200 Range

#### Fire Pump Relief Valve – UL Listed/FM Approved – 150# Flanged

| LEAD FREE* | Model  | Ordering Code | Size (in.) | Body         | Qty. Per Carton | Weight Per Carton (lbs.) | List Price (each) |
|------------|--------|---------------|------------|--------------|-----------------|--------------------------|-------------------|
|            | M116FM | 4421-16       | 1 1/2"     | Ductile Iron | 1               | 35                       | 5,761.00          |
|            | M116FM | 4422-16       | 2"         |              | 1               | 35                       | 6,620.00          |
|            | M116FM | 4423-16       | 2 1/2"     |              | 1               | 70                       | 6,714.00          |
|            | M116FM | 4424-16       | 3"         |              | 1               | 70                       | 10,991.00         |
|            | M116FM | 4425-16       | 4"         |              | 1               | 120                      | 14,076.00         |
|            | M116FM | 4426-16       | 6"         |              | 1               | 220                      | 19,879.00         |
|            | M116FM | 4427-16       | 8"         |              | 1               | 425                      | 31,617.00         |

#### Fire Pump Relief Valve – UL Listed/FM Approved – 300# Flanged

| LEAD FREE* | Model  | Ordering Code | Size (in.) | Body         | Qty. Per Carton | Weight Per Carton (lbs.) | List Price (each) |
|------------|--------|---------------|------------|--------------|-----------------|--------------------------|-------------------|
|            | M116FM | 4422-17       | 2"         | Ductile Iron | 1               | 35                       | 6,620.00          |
|            | M116FM | 4423-17       | 2 1/2"     |              | 1               | 70                       | 7,084.00          |
|            | M116FM | 4424-17       | 3"         |              | 1               | 70                       | 12,111.00         |
|            | M116FM | 4425-17       | 4"         |              | 1               | 120                      | 15,837.00         |
|            | M116FM | 4426-17       | 6"         |              | 1               | 220                      | 21,981.00         |
|            | M116FM | 4427-17       | 8"         |              | 1               | 425                      | 32,421.00         |

| Model | Ordering Code | Size (in.) | Body | Qty. Per Carton | Weight Per Carton (lbs.) | List Price (each) |
|-------|---------------|------------|------|-----------------|--------------------------|-------------------|
|-------|---------------|------------|------|-----------------|--------------------------|-------------------|

### M116FM Globe 100-300 Range

#### Fire Pump Relief Valve – UL Listed/FM Approved – 300# Flanged

| LEAD FREE* | Model  | Ordering Code | Size (in.) | Body         | Qty. Per Carton | Weight Per Carton (lbs.) | List Price (each) |
|------------|--------|---------------|------------|--------------|-----------------|--------------------------|-------------------|
|            | M116FM | 4422-18       | 2"         | Ductile Iron | 1               | 35                       | 6,620.00          |
|            | M116FM | 4423-18       | 2 1/2"     |              | 1               | 70                       | 7,084.00          |
|            | M116FM | 4424-18       | 3"         |              | 1               | 70                       | 12,111.00         |
|            | M116FM | 4425-18       | 4"         |              | 1               | 120                      | 15,837.00         |
|            | M116FM | 4426-18       | 6"         |              | 1               | 220                      | 21,981.00         |
|            | M116FM | 4427-18       | 8"         |              | 1               | 425                      | 32,421.00         |

| Model | Ordering Code | Size (in.) | Body | Qty. Per Carton | Weight Per Carton (lbs.) | List Price (each) |
|-------|---------------|------------|------|-----------------|--------------------------|-------------------|
|-------|---------------|------------|------|-----------------|--------------------------|-------------------|

### M1116FM Angle 20-200 Range

#### Fire Pump Relief Valve – UL Listed/FM Approved – 150# Flanged

| LEAD FREE* | Model   | Ordering Code | Size (in.) | Body         | Qty. Per Carton | Weight Per Carton (lbs.) | List Price (each) |
|------------|---------|---------------|------------|--------------|-----------------|--------------------------|-------------------|
|            | M1116FM | 4422-11       | 2"         | Ductile Iron | 1               | 70                       | 6,620.00          |
|            | M1116FM | 4423-11       | 2 1/2"     |              | 1               | 70                       | 6,714.00          |
|            | M1116FM | 4424-11       | 3"         |              | 1               | 70                       | 10,991.00         |
|            | M1116FM | 4425-11       | 4"         |              | 1               | 120                      | 14,076.00         |
|            | M1116FM | 4426-11       | 6"         |              | 1               | 220                      | 19,879.00         |
|            | M1116FM | 4427-11       | 8"         |              | 1               | 425                      | 31,602.00         |

#### Fire Pump Relief Valve – UL Listed/FM Approved – 300# Flanged

| LEAD FREE* | Model   | Ordering Code | Size (in.) | Body         | Qty. Per Carton | Weight Per Carton (lbs.) | List Price (each) |
|------------|---------|---------------|------------|--------------|-----------------|--------------------------|-------------------|
|            | M1116FM | 4423-14       | 2 1/2"     | Ductile Iron | 1               | 70                       | 7,084.00          |
|            | M1116FM | 4425-14       | 4"         |              | 1               | 120                      | 15,837.00         |
|            | M1116FM | 4426-14       | 6"         |              | 1               | 220                      | 21,981.00         |
| M1116FM    | 4427-14 | 8"            | 1          |              | 425             | 32,421.00                |                   |

#### Fire Pump Relief Valve – UL Listed/FM Approved – 300 X 150 Flanged

| LEAD FREE* | Model   | Ordering Code | Size (in.) | Body         | Qty. Per Carton | Weight Per Carton (lbs.) | List Price (each) |
|------------|---------|---------------|------------|--------------|-----------------|--------------------------|-------------------|
|            | M1116FM | 4424-15       | 3"         | Ductile Iron | 1               | 70                       | 12,337.00         |
|            | M1116FM | 4425-15       | 4"         |              | 1               | 120                      | 16,050.00         |
|            | M1116FM | 4426-15       | 6"         |              | 1               | 220                      | 20,572.00         |
| M1116FM    | 4427-15 | 8"            | 1          |              | 425             | 32,588.00                |                   |

\*The wetted surface of this product contacted by consumable water contains less than 0.25% of lead by weight.

Consult factory for ordering code numbers of special models/options.



| Model | Ordering Code | Size (in.) | Body | Qty. Per Carton | Weight Per Carton (lbs.) | List Price (each) |
|-------|---------------|------------|------|-----------------|--------------------------|-------------------|
|-------|---------------|------------|------|-----------------|--------------------------|-------------------|

### M1116FM Angle 100-300 Range

#### Fire Pump Relief Valve – UL Listed/FM Approved – 300# Flanged

|            |         |         |        |              |   |     |           |
|------------|---------|---------|--------|--------------|---|-----|-----------|
| LEAD FREE* | M1116FM | 4423-13 | 2 1/2" | Ductile Iron | 1 | 70  | 7,084.00  |
|            | M1116FM | 4424-13 | 3"     |              | 1 | 70  | 12,111.00 |
|            | M1116FM | 4425-13 | 4"     |              | 1 | 120 | 15,837.00 |
|            | M1116FM | 4426-13 | 6"     |              | 1 | 220 | 21,981.00 |
|            | M1116FM | 4427-13 | 8"     |              | 1 | 425 | 32,421.00 |

#### Fire Pump Relief Valve – UL Listed/FM Approved – 300 x 150 Flanged

|            |         |         |    |              |   |     |           |
|------------|---------|---------|----|--------------|---|-----|-----------|
| LEAD FREE* | M1116FM | 4424-12 | 3" | Ductile Iron | 1 | 70  | 12,337.00 |
|            | M1116FM | 4425-12 | 4" |              | 1 | 120 | 15,985.00 |
|            | M1116FM | 4426-12 | 6" |              | 1 | 220 | 20,572.00 |
|            | M1116FM | 4427-12 | 8" |              | 1 | 425 | 32,588.00 |

| Model | Ordering Code | Size (in.) | Body | Qty. Per Carton | Weight Per Carton (lbs.) | List Price (each) |
|-------|---------------|------------|------|-----------------|--------------------------|-------------------|
|-------|---------------|------------|------|-----------------|--------------------------|-------------------|

### F116-1FM Globe

#### Fire Pump Suction Control – FM Approved – 150# Flanged

|            |          |         |    |              |   |     |           |
|------------|----------|---------|----|--------------|---|-----|-----------|
| LEAD FREE* | F116-1FM | 3890-08 | 4" | Ductile Iron | 1 | 125 | 16,616.00 |
|------------|----------|---------|----|--------------|---|-----|-----------|

#### Fire Pump Suction Control – FM Approved – 300# Flanged

|            |          |         |    |              |   |     |           |
|------------|----------|---------|----|--------------|---|-----|-----------|
| LEAD FREE* | F116-1FM | 9164-03 | 6" | Ductile Iron | 1 | 225 | 26,047.00 |
|------------|----------|---------|----|--------------|---|-----|-----------|

| Model | Ordering Code | Size (in.) | Body | Qty. Per Carton | Weight Per Carton (lbs.) | List Price (each) |
|-------|---------------|------------|------|-----------------|--------------------------|-------------------|
|-------|---------------|------------|------|-----------------|--------------------------|-------------------|

### F100D-A Globe

#### Pneumatic – Hydraulic Deluge Valve – UL Listed – 150# Flanged

|            |              |      |    |              |   |     |      |
|------------|--------------|------|----|--------------|---|-----|------|
| LEAD FREE* | 100D-A Class | CF** | 8" | Ductile Iron | 1 | 440 | CF** |
|------------|--------------|------|----|--------------|---|-----|------|

| Model | Ordering Code | Size (in.) | Body | Qty. Per Carton | Weight Per Carton (lbs.) | List Price (each) |
|-------|---------------|------------|------|-----------------|--------------------------|-------------------|
|-------|---------------|------------|------|-----------------|--------------------------|-------------------|

### LFPV20CB

#### Pressure Relief Valve – UL Listed/FM Approved

|            |                     |         |      |       |   |     |          |
|------------|---------------------|---------|------|-------|---|-----|----------|
| LEAD FREE* | LFPV20CB 20-200PSI  | 2942-02 | 3/4" | Brass | 1 | 6.5 | 1,525.00 |
|            | LFPV20CB 100-300PSI | 2942-06 | 3/4" |       | 1 | 6.5 | 1,525.00 |
|            | LFPV20CB 200-450PSI | 2942-09 | 3/4" |       | 1 | 6.5 | 2,244.00 |
|            | LFPV20CB 20-200PSI  | 9108-02 | 1/2" |       | 1 | 6.5 | 1,399.00 |
|            | LFPV20CB 100-300PSI | 9108-03 | 1/2" |       | 1 | 6.5 | 1,399.00 |
|            | LFPV20CB 200-450PSI | 9108-07 | 1/2" |       | 1 | 6.5 | 2,139.00 |

CF\*\* - Consult Factory



\*The wetted surface of this product contacted by consumable water contains less than 0.25% of lead by weight.

Consult factory for ordering code numbers of special models/options.

## Figure 10-11

### Modulating Float Control Pilot

| BODY                 | SEAT            | ELASTOMERS | PART #  | LIST PRICE |
|----------------------|-----------------|------------|---------|------------|
| Lead Free 1/2"       | Stainless Steel | Buna-N     | 2990-03 | 1,988.00   |
| Stainless Steel 1/2" | Stainless Steel | Buna-N     | 0204-13 | 5,593.00   |

## Figure 10-13

### On-Off Float Control Pilot

| BODY                               | PORT SIZE | ELASTOMERS | PART #  | LIST PRICE |
|------------------------------------|-----------|------------|---------|------------|
| On-Off Float Control               | 1/16"     | Buna-N     | 6483-17 | 5,353.00   |
| On-Off Float Control               | 1/8"      | Buna-N     | 6468-17 | 5,353.00   |
| On-Off Float Control               | 1/16"     | Buna-N     | 0515-12 | 6,016.00   |
| Float Rod - Stainless - 12" length |           |            | 6926-01 | 112.00     |
| Float Ball - Plastic - 5" diameter |           |            | 6476-01 | 149.00     |

P/N 6483-17 used on 1 1/4" through 2 1/2" valves

P/N 6468-17 used on 3" and 4" valves

P/N 0515-12 used on 6" and larger valves

## PV20DP

### Differential Control Pilot

| BODY                      | SEAT             | ELASTOMERS | PART #    | LIST PRICE |
|---------------------------|------------------|------------|-----------|------------|
| PV20DP 5-30R              | Stainless Steel  |            | 2524-10   | 3,116.00   |
| PV20DP 20-200R            | Stainless Steel  |            | 2524-11   | 3,128.00   |
| Fig. 12 Pilot             | Brass (integral) | Buna-N     | Obsolete* | N/A        |
| Fig. 12 Rubber Repair Kit |                  | Buna-N     | Obsolete* | N/A        |

\* Use PV20DP as a replacement

CF\*\* - Consult Factory

## LFCP14 / LFCP14-1

### Rate Of Flow Control Pilot

| BODY                | SEAT             | ELASTOMERS | PART #  | LIST PRICE |
|---------------------|------------------|------------|---------|------------|
| LFCP14-1            | Brass (integral) | Buna-N     | 244782  | 4,464.00   |
| LFCP14-1            | Brass (integral) | EPDM       | 244783  | 1,811.00   |
| CP14                | Stainless Steel  | Buna-N     | 244770  | 17,274.00  |
| CP14-1              | Stainless Steel  | Buna-N     | 244780  | 17,465.00  |
| LFCP14-1 Rubber Kit |                  | Buna-N     | CF**    | CF**       |
| Fig. 14 Rubber Kit  |                  | Buna-N     | 3297-01 | 277.50     |
| 263DCR Rubber Kit   |                  | Buna-N     | 2655-01 | 335.50     |

Overhaul Kit includes: Stem Assembly and O-rings

CF\*\* - Consult Factory

## Spare Parts and Kits

### LFPV20C / PV20SS

#### Pressure Sustaining / Relief / Surge Control Pilot

| DESCRIPTION                 | BODY            | ELASTOMERS | PART #  | LIST PRICE |
|-----------------------------|-----------------|------------|---------|------------|
| LFPV20C (0-30 psi)          | Brass           | Buna-N     | 9751-18 | 1,590.00   |
| LFPV20C (20-200 psi)        | Brass           | Buna-N     | 9751-19 | 1,590.00   |
| LFPV20C (100-300 psi)       | Brass           | Buna-N     | 9751-20 | 1,590.00   |
| PV20SS (20-200 psi)         | Stainless Steel | Buna-N     | 2524-01 | 4,472.00   |
| PV20SS (100-300 psi)        | Stainless Steel | Buna-N     | 2524-03 | 4,472.00   |
| LFPV20C Rubber Repair Kit   |                 | Buna-N     | 2507-01 | 355.50     |
| LFPV20C Rubber Repair Kit   |                 | Viton      | 2507-02 | 1,224.00   |
| PV20SS Rubber Repair Kit    |                 | Buna-N     | 2507-01 | 355.50     |
| PV20SS Rubber Repair Kit    |                 | Viton      | 2507-02 | 1,224.00   |
| PV20C & PV20SS Overhaul Kit |                 | Buna-N     | 2592-01 | 1,338.00   |
| Figure 16 Rubber Repair Kit |                 | Buna-N     | 4375-01 | 277.50     |
| Figure 16 Rubber Repair Kit |                 | Viton      | 4375-02 | 436.50     |

### LFPV20CB - Direct Acting Relief

| DESCRIPTION                | ELASTOMERS | PART #  | LIST PRICE |
|----------------------------|------------|---------|------------|
| LFPV20CB Rubber Repair kit | Buna-N     | 2507-01 | 355.50     |

### Replacement Springs LFPV20C / PV20SS / LFPV20CB

| SPRING RANGE | PART # | LIST PRICE |
|--------------|--------|------------|
| 0-30 psi     | 219801 | 205.00     |
| 20-200 psi   | 219802 | 205.00     |
| 100-300 psi  | 219803 | 205.00     |

### CP-16

#### Pressure Sustaining / Relief / Surge Control Pilot

| BODY                     | SEAT            | ELASTOMERS | PART #    | LIST PRICE |
|--------------------------|-----------------|------------|-----------|------------|
| 1/2" Bronze (20-200 psi) | Stainless Steel | Buna-N     | Obsolete* | N/A        |
| Rubber Repair Kit        |                 | Buna-N     | 221201    | 316.50     |

Repair Kit includes: Diaphragm, disc (or disc assembly) O-rings, spare screw / gaskets

\* Use LFPV20C as a replacement

CF\*\* - Consult Factory

## LF Figure 22

### Accelerator Control Pilot, Orifice Supply

| BODY              | SEAT             | ELASTOMERS | PART #  | LIST PRICE |
|-------------------|------------------|------------|---------|------------|
| Brass (Lead Free) | Brass (integral) | Buna-N     | 3202-12 | 3,329.00   |
| Brass (Lead Free) | Brass (integral) | EPDM       | 3202-13 | 3,328.00   |
| Stainless Steel   | Stainless Steel  | Buna-N     | 7932-07 | 5,689.00   |
| Stainless Steel   | Stainless Steel  | Viton      | 7932-08 | 6,107.00   |
| Rubber Repair Kit |                  | Buna-N     | 3298-01 | 277.50     |
| F22 Overhaul Kit  |                  | Buna-N     | 7064-03 | 2,467.00   |

Overhaul Kit includes: Stem Assembly and O-rings

CF\*\* - Consult Factory

## LF Figure 22-1

### Accelerator Control Pilot, Positive Shut-Off

| BODY               | SEAT             | ELASTOMERS | PART #  | LIST PRICE |
|--------------------|------------------|------------|---------|------------|
| Brass              | Brass (integral) | Buna-N     | 5353-18 | 2,997.00   |
| Stainless Steel    | Stainless Steel  | Buna-N     | 5353-05 | 4,851.00   |
| Stainless Steel    | Stainless Steel  | Viton      | 5353-04 | 5,207.00   |
| Rubber Repair Kit  |                  | Buna-N     | 6971-01 | 277.50     |
| Rubber Repair Kit  |                  | Viton      | 6971-02 | 373.50     |
| F22-1 Overhaul Kit |                  | Buna-N     | 7064-05 | 2,193.00   |
| F22-1 Overhaul Kit |                  | Viton      | 7064-06 | 2,098.00   |

Overhaul Kit includes: Stem Assembly and O-rings

CF\*\* - Consult Factory

## LF Figure 27

### Altitude Control Pilot

| BODY  | SPRING RANGE       | ELASTOMERS | PART #  | LIST PRICE |
|---|--------------------|------------|---------|------------|
| LF Brass (S.S. Seat)                        | (5-20 ft. range)   | Buna-N     | 8783-03 | 19,858.00  |
| LF Brass (S.S. Seat)                        | (10-75 ft. range)  | Buna-N     | 5010-07 | 19,800.00  |
| LF Brass (S.S. Seat)                        | (50-225 ft. range) | Buna-N     | 5171-03 | 21,432.00  |
| Rubber Repair Kit                           |                    | Buna-N     | 5610-02 | 261.50     |
| Overhaul Kit (S.S. Seat)                    |                    | Buna-N     | 9688-02 | 3,909.00   |
| Figure 23 (Lower 3-Port Control - LF Brass) |                    | Buna-N     | 5020-11 | 3,378.00   |

\*The wetted surface of this product contacted by consumable water contains less than 0.25% of lead by weight.

Consult factory for ordering code numbers of special models/options.

## Gauges

### Liquid Filled - 2-1/2" Face

| CASE            | SIZE | RANGE     | PART #  | LIST PRICE |
|-----------------|------|-----------|---------|------------|
| Stainless Steel | 1/4" | 0-60 PSI  | 0673-04 | 314.00     |
| Stainless Steel | 1/4" | 0-160 PSI | 0673-01 | 539.50     |
| Stainless Steel | 1/4" | 0-300 PSI | 0673-02 | 539.50     |

## LF Figure 60

### Flow Clean Strainers

| BODY              | SIZE (MPT x FPT) | MESH | PART #  | LIST PRICE |
|-------------------|------------------|------|---------|------------|
| Brass (Lead Free) | 1/4"x1/8"        | 50   | 4888-04 | 1,213.00   |
| Brass (Lead Free) | 1/2"x3/8"        | 50   | 4200-06 | 658.00     |
| Brass (Lead Free) | 3/4"x1/2"        | 50   | 5198-03 | 542.50     |
| Stainless Steel   | 1/4"x1/8"        | 50   | 4888-04 | 1,213.00   |
| Stainless Steel   | 3/8"x1/4"        | 50   | 3198-05 | 275.00     |
| Stainless Steel   | 1/2"x1/4"        | 50   | 3198-03 | 308.50     |
| Stainless Steel   | 1/2"x3/8"        | 50   | 4200-06 | 658.00     |
| Stainless Steel   | 3/4"x1/2"        | 50   | 5198-03 | 542.50     |

## LF Figure 60-1

### Y - Strainers

| BODY              | SIZE (MPT x FPT) | MESH | PART #  | LIST PRICE |
|-------------------|------------------|------|---------|------------|
| Brass (Lead Free) | 1/4"             | 50   | 0188-11 | 248.50     |
| Brass (Lead Free) | 3/8"             | 50   | 0188-12 | 296.00     |
| Brass (Lead Free) | 1/2"             | 50   | 10188-1 | 357.00     |
| Stainless Steel   | 1/2"             | 50   | 10415-3 | 1,110.00   |
| S.S. w/Blowdown   | 1/2"             | 50   | 0078-02 | 1,155.00   |

## Figure 75-2

### Chamber Mounted Float Control Pilot

| BODY              | PILOT | ELASTOMERS | PART #  | LIST PRICE |
|-------------------|-------|------------|---------|------------|
| Rubber Repair Kit |       | Buna-N     | 8863-01 | 304.50     |
| Overhaul Kit      |       | Buna-N     | 2589-01 | 1,945.00   |

Overhaul Kit includes: 3-Port Rotary Control Pilot, stud, nuts, and O-ring  
 CF\*\* - Consult Factory

\*The wetted surface of this product contacted by consumable water contains less than 0.25% of lead by weight.

Consult factory for ordering code numbers of special models/options.

## Figure LF263AP

### Pressure Reducing Control Pilot, Integrally Sensed

| BODY                       | SEAT            | ELASTOMERS | PART #  | LIST PRICE |
|----------------------------|-----------------|------------|---------|------------|
| 1/2" LF Brass (0-30 psi)   | Stainless Steel | Buna-N     | 22948   | 682.50     |
| 1/2" LF Brass (20-175 psi) | Stainless Steel | Buna-N     | 22949   | 682.50     |
| Rubber Repair Kit          |                 | Buna-N     | 5138-05 | 277.50     |

Repair Kit includes: Diaphragm, Cover Screw, and Seat Assembly

## Figure 263RS

### Pressure Reducing Control Pilot, Remote Sensed

| BODY                    | SEAT            | ELASTOMERS | PART #  | LIST PRICE |
|-------------------------|-----------------|------------|---------|------------|
| 1/2" S.S. (0-30 psi)    | Stainless Steel | Buna-N     | 9769-02 | 1,880.00   |
| 1/2" S.S. (20-175 psi)  | Stainless Steel | Buna-N     | 9769-01 | 1,880.00   |
| 1/2" S.S. (100-300 psi) | Stainless Steel | Buna-N     | 9769-03 | 1,880.00   |
| Rubber Repair Kit       |                 | Viton      | 9770-01 | 277.50     |

CF\*\* - Consult Factory

## Figure 263SS

### Pressure Reducing Control Pilot, Integrally Sensed

| BODY                    | SEAT            | ELASTOMERS | PART #  | LIST PRICE |
|-------------------------|-----------------|------------|---------|------------|
| 1/2" S.S. (0-30 psi)    | Stainless Steel | Buna-N     | 9831-01 | 1,880.00   |
| 1/2" S.S. (20-175 psi)  | Stainless Steel | Buna-N     | 9831-02 | 1,880.00   |
| 1/2" S.S. (100-300 psi) | Stainless Steel | Buna-N     | 9831-03 | 1,880.00   |
| 1/2" S.S. (20-175 psi)  | Stainless Steel | Viton      | 9674-01 | 2,028.00   |
| 1/2" S.S. (100-300 psi) | Stainless Steel | Viton      | 9674-03 | 2,028.00   |
| Rubber Repair Kit       |                 | Viton      | 5138-06 | 304.50     |

Repair Kit includes: Diaphragm, Cover Screw, and Seat Assembly

## Replacement Springs LF263AP / 263RS / 263SS

| SPRING RANGE                       | PART # | LIST PRICE |
|------------------------------------|--------|------------|
| 0-30 psi                           | 219901 | 225.50     |
| 20-175 psi                         | 219902 | 253.50     |
| 100-300 psi (263RS and 263SS ONLY) | 219903 | 225.50     |

## LFCP-15

### Pressure Reducing Control Pilot

| BODY                     | SEAT            | ELASTOMERS | PART #  | LIST PRICE |
|--------------------------|-----------------|------------|---------|------------|
| 3/8" Bronze (2-30 psi)   | Stainless Steel | Buna-N     | 0661-05 | 738.00     |
| 3/8" Bronze (30-300 psi) | Stainless Steel | Buna-N     | 0661-06 | 738.00     |
| 3/8" Bronze (30-300 psi) | Stainless Steel | EPDM       | 250297  | 3,059.00   |
| 3/8" Bronze (30-300 psi) | Stainless Steel | VITON      | 244043  | 3,853.00   |
| 3/8" S.S. (30-300 psi)   | Stainless Steel | Buna-N     | 244040  | 3,903.00   |
| 3/8" S.S. (30-300 psi)   | Stainless Steel | VITON      | 244041  | 7,424.00   |

Repair Kit includes: Diaphragm, disc (or disc assembly) O-rings, spare screw / gaskets

## Fixed Orifice Assembly

| DESCRIPTION  | PART #  | LIST PRICE |
|--|---------|------------|
| 3/8" LF Brass Elbow w/ SS Orifice (Reducing Bushings included) | 2065501 | 175.00     |
| 3/8" Fixed Orifice Assy. - Flex Tubing Applications            | 2691-27 | 281.00     |
| 3/8" Fixed Orifice Assy. - Stainless Steel Tubing Applications | 251549  | 477.50     |

## Needle Valves

### Restricted Flow in BOTH Directions

| BODY                  | SEAT            | PART #  | LIST PRICE |
|-----------------------|-----------------|---------|------------|
| Stainless Steel, 1/8" | Stainless Steel | 10208-1 | 813.00     |
| Stainless Steel, 1/4" | Stainless Steel | 10208-2 | 895.00     |
| Stainless Steel, 3/8" | Stainless Steel | 10208-3 | 1,396.00   |
| Stainless Steel, 1/2" | Stainless Steel | 10208-4 | 1,889.00   |

## Flow Controls

### Restricted Flow in ONE Direction Only

| BODY                      | SEAT            | PART #  | LIST PRICE |
|---------------------------|-----------------|---------|------------|
| Lead Free Brass, 1/2"     | Lead Free Brass | 6001892 | 212.50     |
| Stainless Steel, 1/4"     | Stainless Steel | 0150-12 | 1,133.00   |
| Stainless Steel, 3/8"     | Stainless Steel | 0150-13 | 1,398.00   |
| Stainless Steel, 1/2"     | Stainless Steel | 0150-14 | 1,548.00   |
| 316 Stainless Steel, 1/4" | Stainless Steel | 0150-15 | 2,781.00   |
| 316 Stainless Steel, 1/2" | Stainless Steel | 0150-17 | 3,137.00   |

CF\*\* - Consult Factory

\*The wetted surface of this product contacted by consumable water contains less than 0.25% of lead by weight.

Consult factory for ordering code numbers of special models/options.

## Isolation Check Valves

| BODY                  | SEAT            | PART #  | LIST PRICE |
|-----------------------|-----------------|---------|------------|
| LF Brass, 1/4"        | Stainless Steel | 10180-2 | 325.50     |
| LF Brass, 3/8"        | Stainless Steel | 10180-3 | 325.50     |
| LF Brass, 1/2"        | Stainless Steel | 10180-4 | 325.50     |
| Stainless Steel, 1/4" | Stainless Steel | 10475-2 | 544.50     |
| Stainless Steel, 3/8" | Stainless Steel | 10475-3 | 727.00     |
| Stainless Steel, 1/2" | Stainless Steel | 10475-4 | 727.00     |

## Isolation Ball Valves

| DESCRIPTION                       | PART #   | LIST PRICE |
|-----------------------------------|----------|------------|
| 1/4" Ball Valve (Lead Free Brass) | 88005596 | 33.75      |
| 3/8" Ball Valve (Lead Free Brass) | 88005598 | 33.75      |
| 1/2" Ball Valve (Lead Free Brass) | 88005687 | 33.75      |
| 1/4" Ball Valve (Stainless Steel) | 0548010  | 281.50     |
| 3/8" Ball Valve (Stainless Steel) | 0548011  | 298.50     |
| 1/2" Ball Valve (Stainless Steel) | 0548012  | 332.00     |

## TC4 Air Bleed Test Cocks

| DESCRIPTION                      | PART #  | LIST PRICE |
|----------------------------------|---------|------------|
| 1/4" Test Cock (Lead Free Brass) | 0792000 | 150.50     |
| 1/8" Test Cock (Stainless Steel) | 7001156 | 130.50     |

## Solenoids

### 2-Way / 3-Way

|             |  |
|-------------|--|
| VOLTAGE:    | 120 VAC is Standard; Optional 24 VAC, 240 VAC, 480 VAC<br>VDC Solenoids are available - Please Consult Factory |
| ACTUATION:  | Energize to Open Main Valve (OR) Energize to Close Main Valve  |
| ENCLOSURE:  | General Purpose (NEMA 4) Standard<br>Explosion Proof (NEMA 7) available - Please Consult Factory               |
| WHERE USED: | 113-12, 113-6, 113-21, 413-21, 513-5, 513-6 (etc.)   |

| DESCRIPTION   | PART #  | LIST PRICE |
|---|---------|------------|
| 2-WAY / General Purpose / Stainless Steel / Buna / NEMA 4 | Consult | CF**       |
| 3-WAY / General Purpose / Stainless Steel / Buna / NEMA 4 | Consult | CF**       |

CF\*\* - Consult Factory

# Spare Parts and Kits

## Mustang Figure 50

### Valve Position Indicator

| BODY                   | SIGHT GLASS | ELASTOMERS | PART #  | LIST PRICE |
|------------------------|-------------|------------|---------|------------|
| Stainless Steel 1-1/4" | Pyrex       | Buna-N     | A500530 | 1,125.00   |
| Stainless Steel 1-1/2" | Pyrex       | Buna-N     | A500530 | 1,125.00   |
| Stainless Steel 2"     | Pyrex       | Buna-N     | A500531 | 1,254.00   |
| Stainless Steel 2-1/2" | Pyrex       | Buna-N     | A500531 | 1,254.00   |
| Stainless Steel 3"     | Pyrex       | Buna-N     | A500532 | 1,082.00   |
| Stainless Steel 4"     | Pyrex       | Buna-N     | A500533 | 1,082.00   |
| Stainless Steel 6"     | Pyrex       | Buna-N     | A500524 | 1,082.00   |
| Stainless Steel 8"     | Pyrex       | Buna-N     | A500535 | 1,300.00   |
| Stainless Steel 10"    | Pyrex       | Buna-N     | A500536 | 1,399.00   |
| Stainless Steel 12"    | Pyrex       | Buna-N     | A500537 | 1,817.00   |
| Stainless Steel 14"    | Pyrex       | Buna-N     | A500546 | 2,556.00   |
| Stainless Steel 16"    | Pyrex       | Buna-N     | A500547 | 4,352.00   |
| Stainless Steel 20"    | Pyrex       | Buna-N     | A500547 | 4,352.00   |
| Stainless Steel 24"    | Pyrex       | Buna-N     | A500547 | 4,352.00   |

### OVERHAUL KITS

|                          |       |        |         |        |
|--------------------------|-------|--------|---------|--------|
| Overhaul Kit 1-1/4" - 6" | Pyrex | Buna-N | 2594-01 | 277.50 |
| Overhaul Kit 8" - 10"    | Pyrex | Buna-N | 2594-02 | 277.50 |
| Overhaul Kit 12" - 16"   | Pyrex | Buna-N | 2594-03 | 277.50 |
| Overhaul Kit 1-1/4" - 6" | Pyrex | Viton  | 2594-04 | 404.50 |
| Overhaul Kit 8" - 10"    | Pyrex | Viton  | 2594-05 | 404.50 |

Overhaul Kit includes: Two Gaskets and One Sight Glass

## Mustang Figure 53

### Manual Flow Limiter

| BODY                     | STEM            | ELASTOMER | PART # | LIST PRICE |
|--------------------------|-----------------|-----------|--------|------------|
| 2" - 3" Stainless Steel  | Stainless Steel | Buna-N    | CF**   | CF**       |
| 4" - 6" Stainless Steel  | Stainless Steel | Buna-N    | CF**   | CF**       |
| 8" - 10" Stainless Steel | Stainless Steel | Buna-N    | CF**   | CF**       |

Sizes listed for Mustang valves only.

CF\*\* - Consult Factory

\*The wetted surface of this product contacted by consumable water contains less than 0.25% of lead by weight.

Consult factory for ordering code numbers of special models/options.

**Figure 51**

**Single Limit Switch Assembly**

| BODY                                     | ELASTOMERS | PART #  | LIST PRICE |
|--|------------|---------|------------|
| 1-1/4" Stainless Steel, Nema 4 Enclosure | Buna-N     | A500638 | 3,328.00   |
| 1-1/2" Stainless Steel, Nema 4 Enclosure | Buna-N     | A500638 | 3,328.00   |
| 3" Stainless Steel, Nema 4 Enclosure     | Buna-N     | A500639 | 3,021.00   |
| 4" Stainless Steel, Nema 4 Enclosure     | Buna-N     | A500636 | 3,053.00   |
| 6" Stainless Steel, Nema 4 Enclosure     | Buna-N     | A500634 | 8,505.00   |
| 10" Stainless Steel, Nema 4 Enclosure    | Buna-N     | A500604 | 2,858.00   |

**REPAIR KITS**

|                          |        |         |        |
|--------------------------|--------|---------|--------|
| Rubber (Seal) Repair Kit | Buna-N | 0273-01 | 277.50 |
| Rubber (Seal) Repair Kit | VITON  | 0273-02 | 436.50 |

Repair Kit includes: Polypak, Shaft Wiper, and (2) O-rings  
 CF\*\* - Consult Factory

**Figure 51-1**

| BODY                                     | ELASTOMERS | PART #  | LIST PRICE |
|--|------------|---------|------------|
| 1-1/4" Stainless Steel, Nema 4 Enclosure | Buna-N     | A500640 | 10,503.00  |
| 1-1/2" Stainless Steel, Nema 4 Enclosure | Buna-N     | A500640 | 10,503.00  |
| 2" Stainless Steel, Nema 4 Enclosure     | Buna-N     | A500641 | 8,668.00   |
| 2-1/2" Stainless Steel, Nema 4 Enclosure | Buna-N     | A500641 | 8,668.00   |
| 3" Stainless Steel, Nema 4 Enclosure     | Buna-N     | A500642 | 10,437.00  |
| 4" Stainless Steel, Nema 4 Enclosure     | Buna-N     | A500643 | 9,909.00   |
| 6" Stainless Steel, Nema 4 Enclosure     | Buna-N     | A500644 | 8,415.00   |
| 8" Stainless Steel, Nema 4 Enclosure     | Buna-N     | A500655 | 3,874.00   |
| 16" Stainless Steel, Nema 4 Enclosure    | Buna-N     | A500659 | 5,035.00   |

**REPAIR KITS**

|                          |        |         |        |
|--------------------------|--------|---------|--------|
| Rubber (Seal) Repair Kit | Buna-N | 0273-01 | 277.50 |
| Rubber (Seal) Repair Kit | VITON  | 0273-02 | 436.50 |

Repair Kit includes: Polypak, Shaft Wiper, and (2) O-rings  
 CF\*\* - Consult Factory

## Mustang Single Chamber

### Main Valve Repair Kits

**Each Kit includes: Diaphragm, Disc, and Spacer Washers (ALL Rubber Goods)**

Reduced Port valves use repair kits one (1) size smaller than valve size (EX: 6" series = 4")

| SIZE             | ELASTOMER | PART #  | LIST PRICE |
|------------------|-----------|---------|------------|
| 1-1/4" & 1-1/2"  | Buna-N    | 0677-01 | 212.00     |
| 2"               | Buna-N    | 0677-02 | 275.50     |
| 2-1/2"           | Buna-N    | 0677-03 | 277.50     |
| 3"               | Buna-N    | 0677-04 | 300.50     |
| 4"               | Buna-N    | 0677-05 | 428.50     |
| 6"               | Buna-N    | 0677-06 | 635.50     |
| 8"               | Buna-N    | 0677-07 | 710.50     |
| 10"              | Buna-N    | 0677-08 | 1,024.00   |
| 12"              | Buna-N    | 0677-09 | 1,328.00   |
| 14"              | Buna-N    | 0677-10 | 3,596.00   |
| 16"              | Buna-N    | 0677-11 | 7,389.00   |
| 20" reduced port | Buna-N    | 0677-11 | 7,389.00   |
| 24" reduced port | Buna-N    | 0677-11 | 7,389.00   |

## Mustang Dual Chamber

### Main Valve Repair Kits

**Each Kit includes: Diaphragm, Disc, and Spacer Washers (ALL Rubber Goods)**

Reduced Port valves use repair kits one (1) size smaller than valve size (EX: 6" series = 4")

| SIZE             | ELASTOMER | PART #  | LIST PRICE |
|------------------|-----------|---------|------------|
| 2"               | Buna-N    | 0677-21 | 488.00     |
| 2-1/2"           | Buna-N    | 0677-22 | 509.00     |
| 3"               | Buna-N    | 0677-23 | 745.50     |
| 4"               | Buna-N    | 0677-24 | 745.50     |
| 6"               | Buna-N    | 0677-25 | 1,098.00   |
| 8"               | Buna-N    | 0677-26 | 2,713.00   |
| 10"              | Buna-N    | CF**    | CF**       |
| 12"              | Buna-N    | 0677-28 | 2,960.00   |
| 14"              | Buna-N    | 0677-29 | 4,210.00   |
| 16"              | Buna-N    | 0677-30 | 5,059.00   |
| 20" reduced port | Buna-N    | 0677-30 | 5,059.00   |
| 24" reduced port | Buna-N    | 0677-30 | 5,059.00   |

CF\*\* - Consult Factory

## Mustang Single Chamber

### Main Valve Stem Assembly Kits

**Each Kit includes: Diaphragm, Stem Nut, Disc Guide, Spacer Washer, Diaphragm Washer, Stem, Disc Retainer, and Disc (Complete Drop-in unit)**

Reduced Port valves use repair kits one (1) size smaller than valve size (EX: 6" series = 4")

| SIZE             | ELASTOMER | PART #  | LIST PRICE |
|------------------|-----------|---------|------------|
| 1-1/4" & 1-1/2"  | Buna-N    | A101550 | 751.50     |
| 3"               | Buna-N    | A103050 | 1,078.00   |
| 4"               | Buna-N    | A104050 | 1,556.00   |
| 6"               | Buna-N    | A106050 | 2,378.00   |
| 8"               | Buna-N    | A108050 | 4,245.00   |
| 10"              | Buna-N    | CF**    | CF**       |
| 12"              | Buna-N    | CF**    | CF**       |
| 14"              | Buna-N    | CF**    | CF**       |
| 16"              | Buna-N    | CF**    | CF**       |
| 20" reduced port | Buna-N    | CF**    | CF**       |
| 24" reduced port | Buna-N    | CF**    | CF**       |

CF\*\* - Consult Factory

## Classic "F" Series: Figure 50

### Valve Position Indicator

| BODY                   | SIGHT GLASS | ELASTOMERS | PART #  | LIST PRICE |
|------------------------|-------------|------------|---------|------------|
| Stainless Steel 1-1/4" | Pyrex       | Buna-N     | 9760-02 | 1,501.00   |
| Stainless Steel 1-1/2" | Pyrex       | Buna-N     | 9760-02 | 1,501.00   |
| Stainless Steel 2"     | Pyrex       | Buna-N     | 9760-02 | 1,501.00   |
| Stainless Steel 2-1/2" | Pyrex       | Buna-N     | 3242-10 | 1,501.00   |
| Stainless Steel 3"     | Pyrex       | Buna-N     | 3242-10 | 1,501.00   |
| Stainless Steel 4"     | Pyrex       | Buna-N     | 3237-05 | 1,501.00   |
| Stainless Steel 6"     | Pyrex       | Buna-N     | 9789-02 | 1,501.00   |
| Stainless Steel 8"     | Pyrex       | Buna-N     | 3343-06 | 1,540.00   |
| Stainless Steel 10"    | Pyrex       | Buna-N     | 4726-08 | 1,602.00   |
| Stainless Steel 12"    | Pyrex       | Buna-N     | 5167-07 | 2,171.00   |
| Stainless Steel 14"    | Pyrex       | Buna-N     | CF**    | CF**       |
| Stainless Steel 16"    | Pyrex       | Buna-N     | 5885-05 | 2,393.00   |

### OVERHAUL KITS

|                          |       |        |         |        |
|--------------------------|-------|--------|---------|--------|
| Overhaul Kit 1-1/4" - 6" | Pyrex | Buna-N | 2594-01 | 277.50 |
| Overhaul Kit 8" - 10"    | Pyrex | Buna-N | 2594-02 | 277.50 |
| Overhaul Kit 1-1/4" - 6" | Pyrex | Viton  | 2594-04 | 404.50 |
| Overhaul Kit 8" - 10"    | Pyrex | Viton  | 2594-05 | 404.50 |

Overhaul Kit includes: Two Gaskets and One Sight Glass

CF\*\* - Consult Factory

## Classic "F" Series Single Chamber

### Main Valve Repair Kits

Each Kit Contains ALL Rubber Repair Parts in Main Valve

| SIZE                                    | ELASTOMER | PART #  | LIST PRICE |
|---|-----------|---------|------------|
| 1-1/4" - 4", LF Brass, Nema 4 Enclosure | Buna-N    | 9250-02 | 2,638.00   |
| 6", LF Brass, Nema 4 Enclosure          | Buna-N    | 9932-02 | 2,251.00   |
| 8" - 16", LF Brass, Nema 4 Enclosure    | Buna-N    | 9251-01 | 2,802.00   |

### REPAIR KITS

|                          |        |         |        |
|--------------------------|--------|---------|--------|
| Rubber (Seal) Repair Kit | Buna-N | 0273-01 | 277.50 |
|--------------------------|--------|---------|--------|

Repair Kit includes: Polypak, Shaft Wiper, and (2) O-rings

### OVERHAUL KITS

|                          |        |         |          |
|--------------------------|--------|---------|----------|
| Overhaul Kit 1 1/4" - 4" | Buna-N | 9254-02 | 954.00   |
| Overhaul Kit 8" - 16"    | Buna-N | 9255-01 | 1,278.00 |

Overhaul Kit includes: Stem/Body Assembly and Mounting Plate (less Microswitch)

\*The wetted surface of this product contacted by consumable water contains less than 0.25% of lead by weight.

Consult factory for ordering code numbers of special models/options.











To locate your nearest Watts representative, please click on our *find a sales rep* locator on [watts.com](http://watts.com).

**Represented by:**

